

valvole G1/2" azionamento pneumatico

pneumatically piloted valves - G1/2"



- Valvole a spola 3/2-5/2-5/3 con attacchi filettati G1/2"
3/2-5/2-5/3 spool valves with G1/2" threaded ports
- Elevatissima portata
Very high flow rate
- Montaggio in linea
Installation in-line
- Azionamento pneumatico monostabile o bistabile
Mono-stable or bi-stable pneumatic pilot
- Multifunzionalità e adattabilità
Multifunction feature



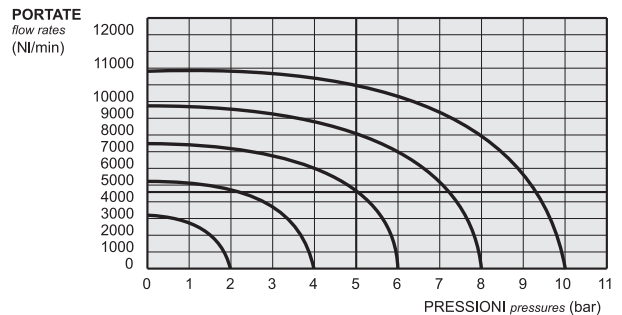
Kit ricambi - spare parts

02.030.2 : per valvole a 3 vie [for 3 way valves] ME - ME AS - MC

02.031.2 : per valvole a 5 vie [for 5 way valves] ME - ME AS - MC

02.032.2 : per valvole a 3 vie [for 3 way valves] EE - EE AS - CC

02.033.2 : per valvole a 5 vie [for 5 way valves] EE - EE AS - CC



Tempi di risposta - response times

monostabile <i>mono-stable</i>	TRA (14): 24 ms TRR (12): 43 ms
bistabile <i>bi-stable</i>	TRA (14): 30 ms TRR (12): 30 ms

Materiali

Corpo: alluminio 11S

Molle: INOX

Guarnizioni: NBR

Spola: alluminio nichelato

Parti interne: ottone OT58

Materials

Body: aluminium 11S

Springs: stainless steel

Seals: NBR

Spool: nickel plated aluminium

Internal parts: brass OT58

Diametro nominale <i>Nominal orifice</i>	13 mm	
Portata nominale a 6 bar, Δp 1 bar <i>Nominal flow rate at 6 bar, Δp 1 bar</i>	4600 NI/min	
Temperatura di esercizio <i>Temperature range</i>	max +60°C	
Pressione di esercizio <i>Working pressure</i>	monostabile [mono-stable]	bistabile [bi-stable]
	2.5 ... 10 bar 0.25 ... 1 MPa	-0.9 ... 10 bar -0.09 ... 1 MPa
Pressione di azionamento <i>Actuating pressure</i>	monostabile [mono-stable]	bistabile [bi-stable]
	2.5 ... 10 bar 0.25 ... 1 MPa	1 ... 10 bar 0.1 ... 1 MPa
Fluido <i>Fluid</i>	Aria filtrata 50μ con o senza lubrificazione <i>50μ filtered, lubricated or non lubricated air</i>	

valvole G1/2" azionamento pneumatico

pneumatically piloted valves - G1/2"



Multifunzionalità e adattabilità della valvola

La funzione della valvola può essere variata in ogni momento secondo necessità cambiando la posizione dei tappi da M5 e G1/8" collocati nel corpo secondo gli schemi sottoriportati.

La valvola è fornita nella configurazione richiesta al momento dell'ordine. Eventuali tappi aggiuntivi possono essere ordinati separatamente.

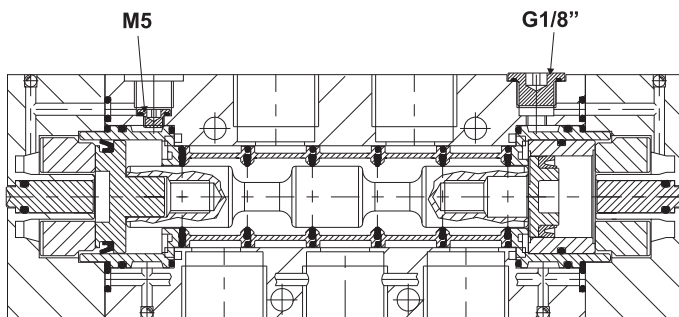
Multifunction feature of the valve

The function of the valve can be changed in any moment. To do this it is enough to change the position of the plugs M5 and G1/8", which are inserted into the body according to the scheme.

The valve is supplied in the configuration specified on the order. More plugs can be ordered separately.

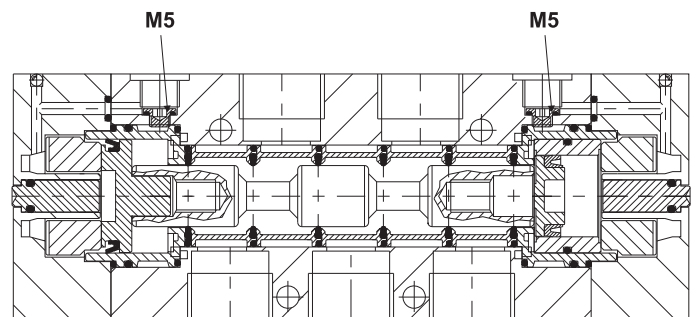
324 CFP

524 CFP



324 CCD

524 CCD



valvole G1/2" azionamento pneumatico

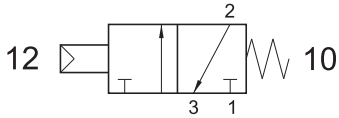
pneumatically piloted valves - G1/2"



324 MC

3/2 1/2" NC comando pneumatico - ritorno a molla

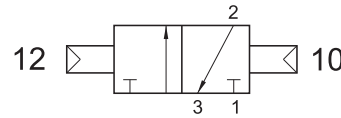
3/2 1/2" NC pneumatic pilot - spring return



324 CC

3/2 1/2" doppio comando pneumatico

3/2 1/2" double pneumatic pilot

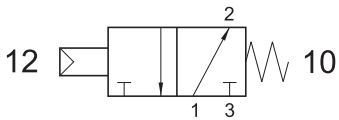


Può essere utilizzata con vuoto.
It can be used with vacuum.

324 MCA

3/2 1/2" NA comando pneumatico - ritorno a molla

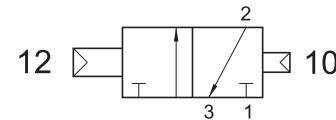
3/2 1/2" NO pneumatic pilot - spring return



324 CCD

3/2 1/2" doppio comando pneumatico - con differenziale

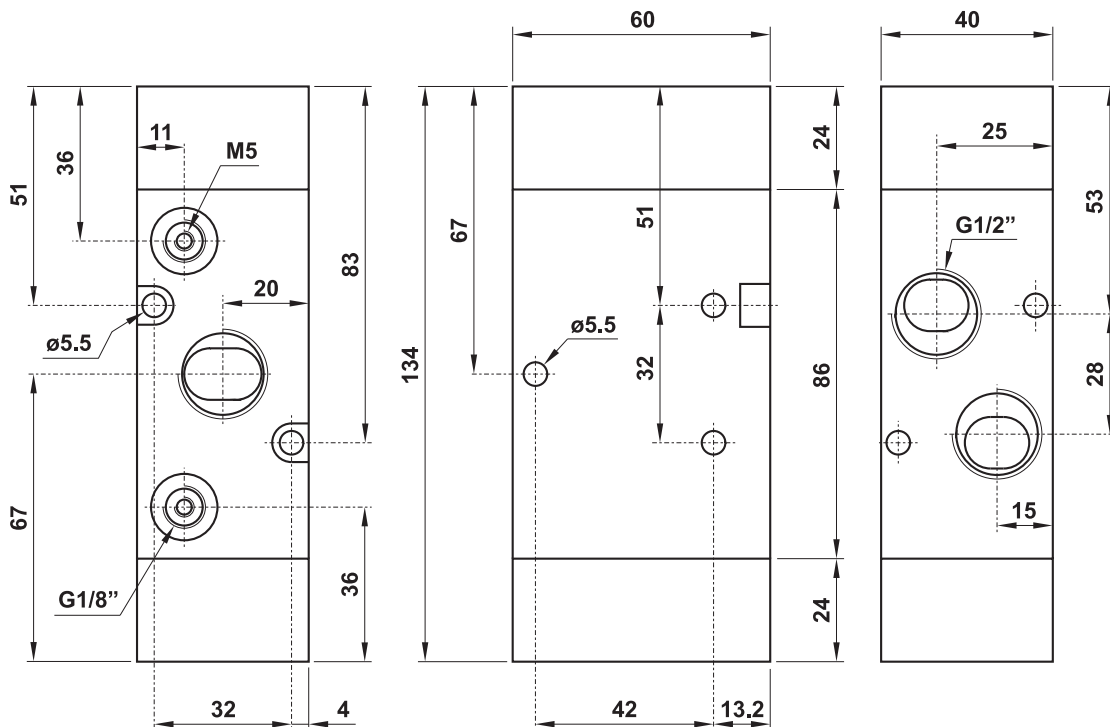
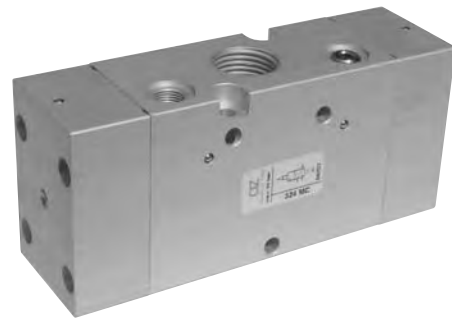
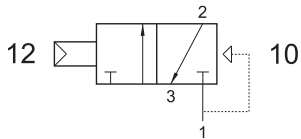
3/2 1/2" double pneumatic pilot - with differential



324 CFP

3/2 1/2" NC comando pneumatico - ritorno a molla pneumatica

3/2 1/2" NC pneumatic pilot - pneumatic spring return



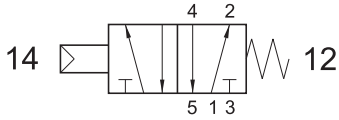
valvole G1/2" azionamento pneumatico

pneumatically piloted valves - G1/2"



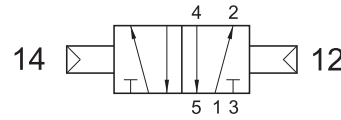
524 MC

5/2 1/2" comando pneumatico - ritorno a molla
5/2 1/2" *pneumatic pilot - spring return*



524 CC

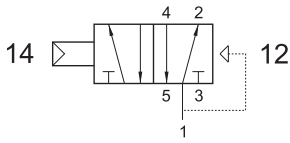
5/2 1/2" doppio comando pneumatico
5/2 1/2" *double pneumatic pilot*



Può essere utilizzata con vuoto.
It can be used with vacuum.

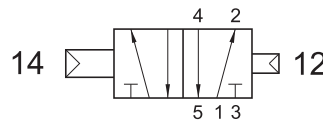
524 CFP

5/2 1/2" comando pneumatico - ritorno a molla pneumatica
5/2 1/2" *pneumatic pilot - pneumatic spring return*



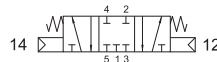
524 CCD

5/2 1/2" doppio comando pneumatico - con differenziale
5/2 1/2" *double pneumatic pilot - with differential*



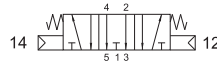
5243C CC

centri chiusi
closed centres



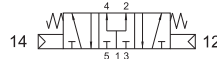
5243A CC

centri aperti
open centres



5243P CC

centri in pressione
pressurized centres



5/3 1/2" doppio comando pneumatico
5/3 1/2" *double pneumatic pilot*

