

# fissaggi per cilindri compatti ISO 21287

fixing elements for ISO 21287 compact cylinders

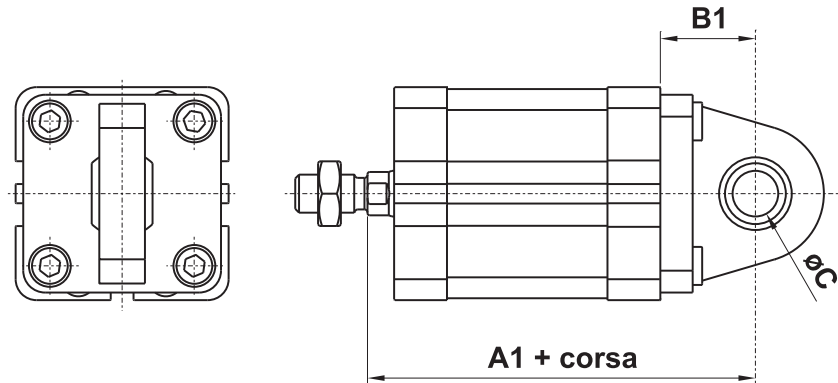


Per altre informazioni vedi le pagine 538-544 (fissaggi per cilindri ISO 15552)

For more information refer to pages 538-544 (fixing elements for cylinders ISO 15552)

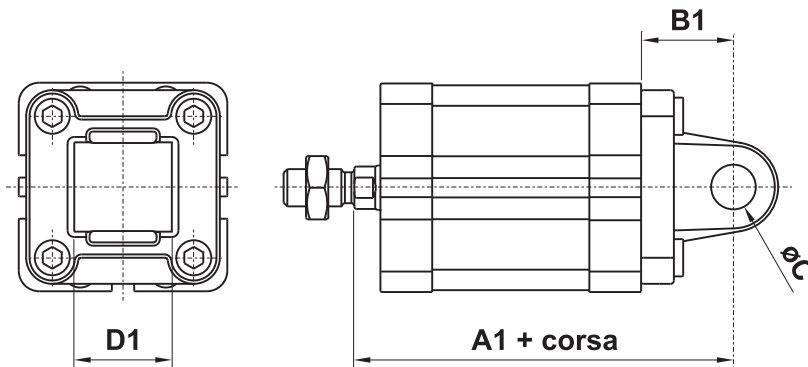
## CERNIERA MASCHIO SNODO SFERICO (ø32 ... ø100)

CMSS...



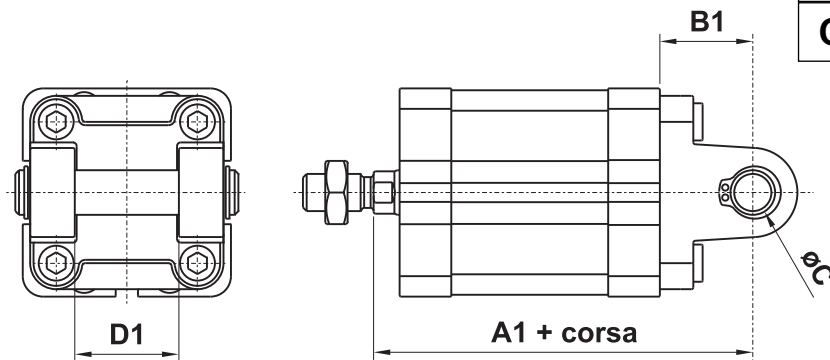
## CERNIERA MASCHIO (ø25 ... ø100)

CMIS...  
CMKS...



## CERNIERA FEMMINA CON PERNO (ø32 ... ø100)

CFIS...  
CFKS...



ø	A1	B1	C	D1
25	65	20	8	16
32	73	22	10	26
40	77	25	12	28
50	80	27	12	32
63	89	32	16	40
80	100	36	16	50
100	118	41	20	60

# fissaggi per cilindri compatti ISO 21287

fixing elements for ISO 21287 compact cylinders



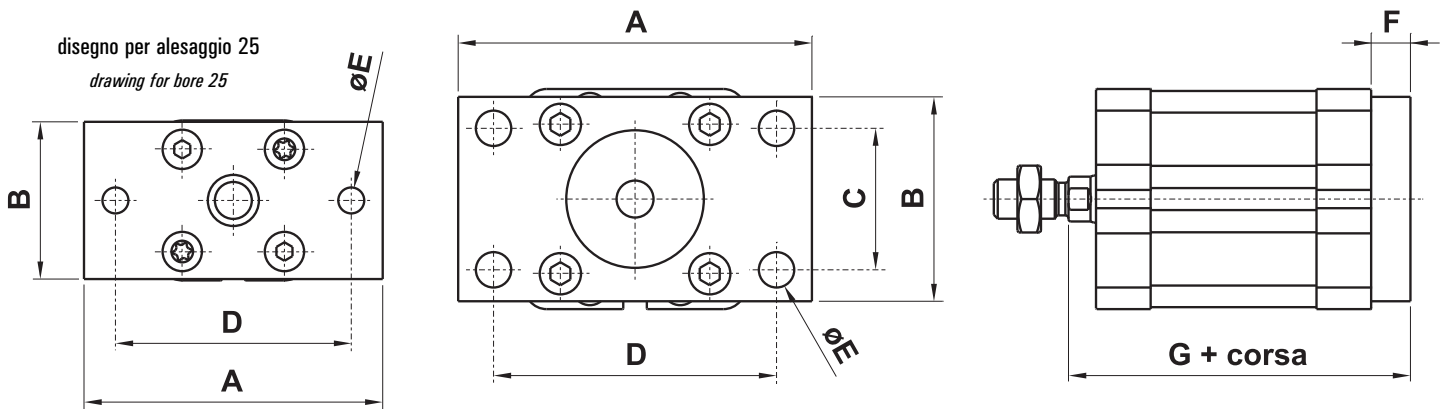
Per altre informazioni vedi le pagine 538-544 (fissaggi per cilindri ISO 15552)

For more information refer to pages 538-544 (fixing elements for cylinders ISO 15552)

## FLANGIA

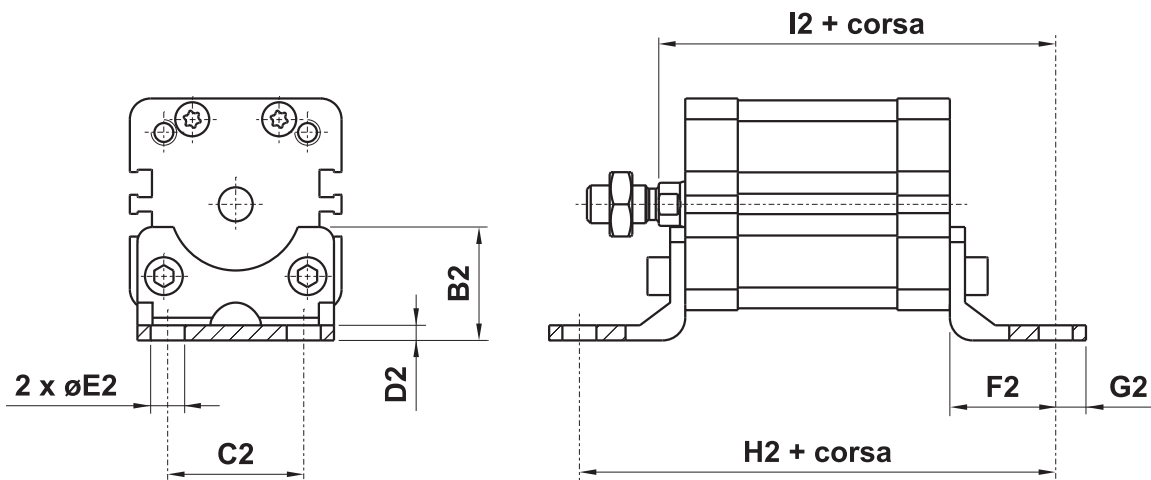
FLIS...

disegno per alesaggio 32-100  
drawing for bore 32-100



## PIEDINO

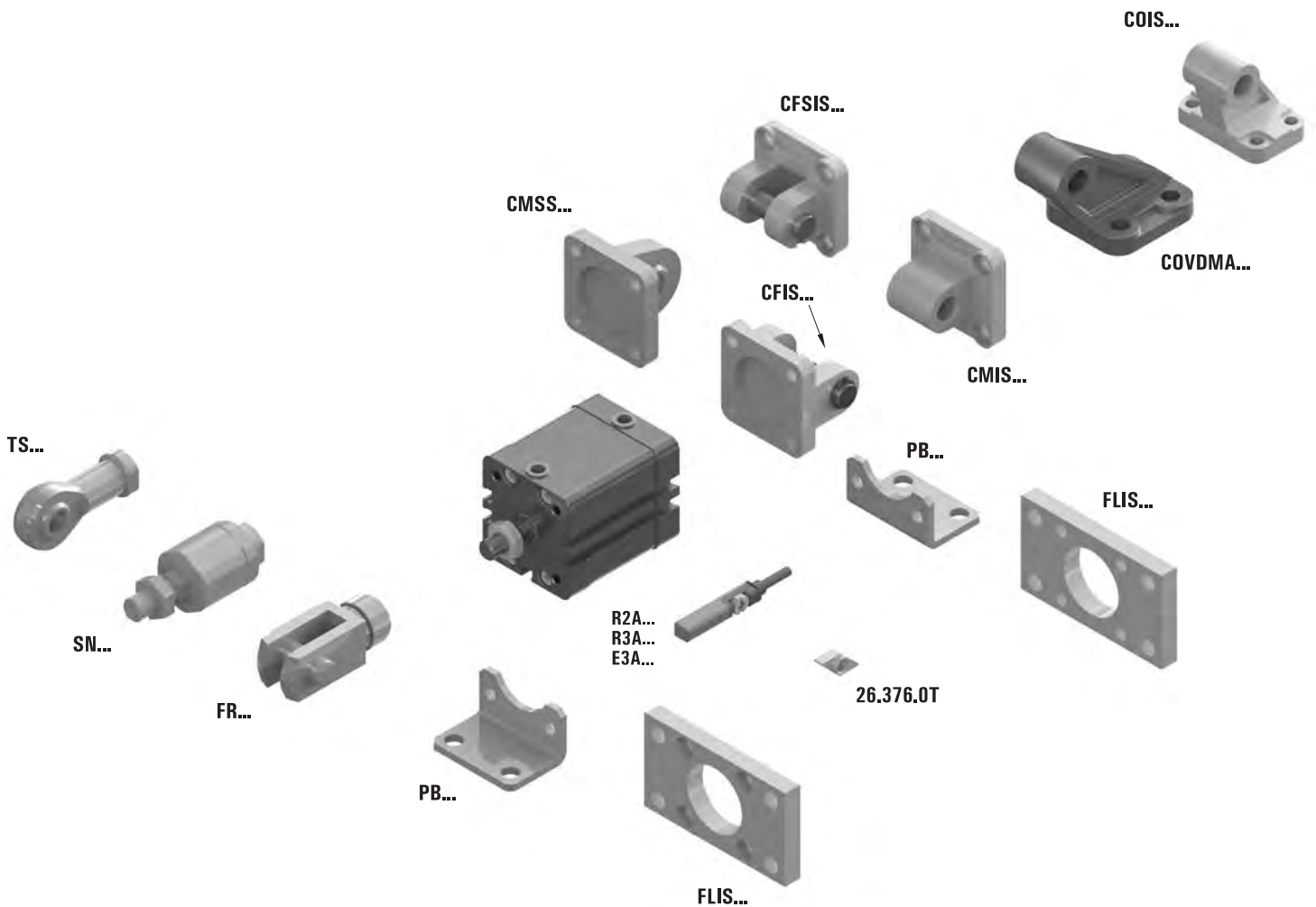
PBIS...



G	F	E	D	C	B	A	∅	B2	C2	D2	E2	F2	G2	H2	I2	codice code
55	10	6.6	60	-	40	76	25	23	26	4	6.6	16	6	71	61	26.536.2
61	10	7	64	32	45	80	32	30	32	4	7	24	11	92	75	26.037.2N
62	10	9	72	36	52	90	40	30	36	4	9	28	8	101	80	26.038.2N
65	12	9	90	45	65	110	50	36	45	5	9	32	15	109	85	26.039.2N
69	12	9	100	50	75	120	63	35	50	5	9	32	13	113	89	26.040.2N
80	16	12	126	63	95	150	80	47	63	5	12	41	14	136	105	26.041.2N
93	16	14	150	75	115	170	100	53	75	8	14	41	16	149	118	26.042.2N

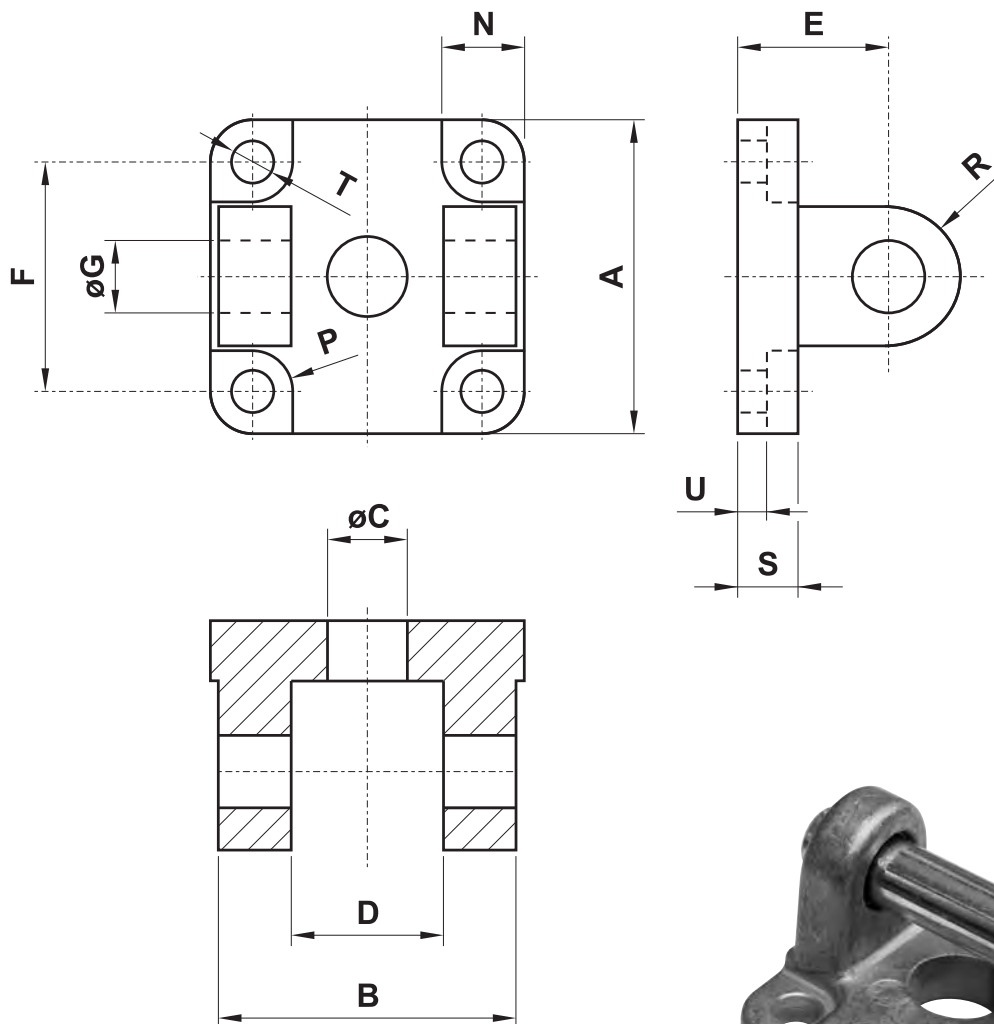
## SCHEMA PER LA SCELTA DEGLI ACCESSORI ISO 21287

scheme for the choice of accessories ISO 21287



6

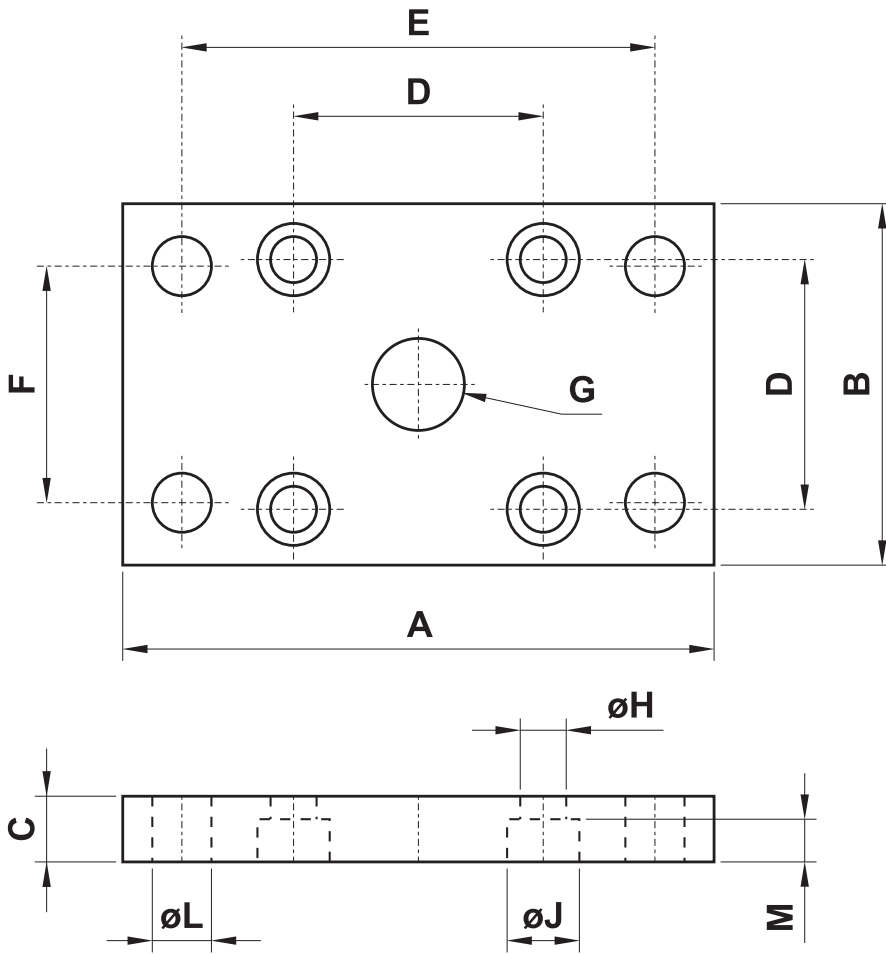
## CERNIERA FEMMINA CON PERNO (female hinge with pin)



6

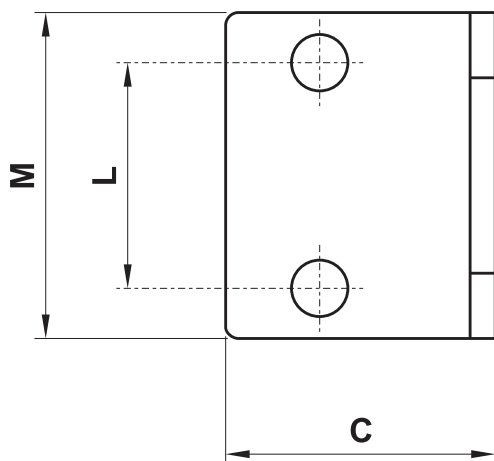
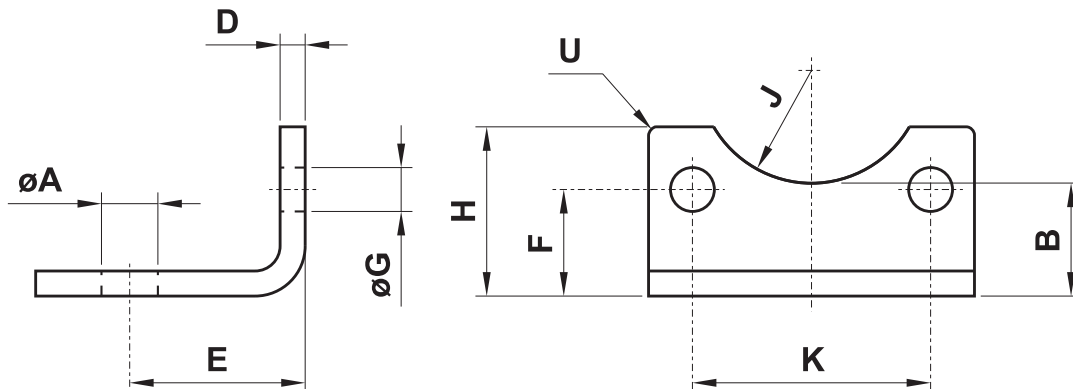
sigla part number	sigla part number	per alesaggio for bore	A	B	C	D	E	F	G	N	P	R	S	T	U
standard	con boccola di bronzo														
<b>CFUN032</b>	<b>CFKN032</b>	32	48	45	14	26	22	32	10	13.5	5.5	10	9	6.6	5.5
<b>CFUN040</b>	<b>CFKN040</b>	40	58	52	14	28	25	42	12	13.5	5.5	12.5	9	6.6	5.5
<b>CFUN050</b>	<b>CFKN050</b>	50	66	60	18	32	27	50	12	15.5	7.5	12.5	11	9	6.5
<b>CFUN063</b>	<b>CFKN063</b>	63	83	70	18	40	32	62	16	18	7.5	15	11	11	6.5
<b>CFUN080</b>	<b>CFKN080</b>	80	102	90	23	50	36	82	16	19	9	15	13	11	10
<b>CFUN100</b>	<b>CFKN100</b>	100	123	110	28	60	41	103	20	19	9	20	15	11	10

## FLANGIA (flange)



sigla part number	per alesaggio for bore	A	B	C	D	E	F	G	H	J	L	M
FLUN032	32	80	50	10	32	65	32	ø14	6.6	11	7	6.4
FLUN040	40	102	60	10	42	82	36	ø14	6.6	11	9	6.4
FLUN050	50	110	68	12	50	90	45	ø18	9	15	9	8.6
FLUN063	63	130	87	15	62	110	50	ø18	11	15	9	8.6
FLUN080	80	160	107	15	82	135	63	ø23	11	18	12	10.6
FLUN100	100	190	128	15	103	163	75	ø28	11	18	14	10.6

## PIEDINO (foot mounting)



sigla* part number*	per alesaggio for bore	A	B	C	D	E	F	G	H	J	K	L	M	U
PBUN025	25	6.6	19	22	4	16	17	5.4	23	11	26	26	40	2
PBUN032	32	6.6	20	26	5	18	16	6.6	24	12	32	32	50	2
PBUN040	40	9	-	28	5	20	21.5	6.6	29.5	-	42	42	60	5
PBUN050	50	9	-	32	6	24	22	9	30	-	50	50	68	5
PBUN063	63	11	-	39	6	27	28.5	9	39	-	62	62	84	5
PBUN080	80	11	-	42	8	30	24.5	11	36.5	-	82	82	102	5
PBUN100	100	13.5	-	45	8	33	26.5	11	38.5	-	103	103	123	5

\* La sigla si riferisce a un solo piedino e non alla coppia

\* The part number is referred to only one element and not to the couple

## MONTAGGIO DEL CILINDRO SENZA UTILIZZARE I FISSAGGI

mounting the cylinder without using fixing elements

I cilindri compatti possono essere fissati anteriormente o posteriormente mediante viti di opportuna lunghezza utilizzando i fori passanti presenti nelle testate e nella camicia. Usare viti amagnetiche per evitare interferenze con il magnete del pistone.

**Attenzione:** questo tipo di montaggio non è possibile per i cilindri compatti UNITOP  $\varnothing 80$  e  $\varnothing 100$  in quanto i fori di fissaggio presenti nelle testate non sono passanti.

*The compact cylinders can be mounted on the front or on the rear side with screws of appropriate length using the passing-through holes present in the end-cups and in the barrel.*

*Use non-magnetic screws to avoid interference with the magnet in the piston.*

**Attention:** this type of mounting is not possible for UNITOP  $\varnothing 80$  and  $\varnothing 100$  compact cylinders, because the fixing holes in the end-cups are not passing-through.

