

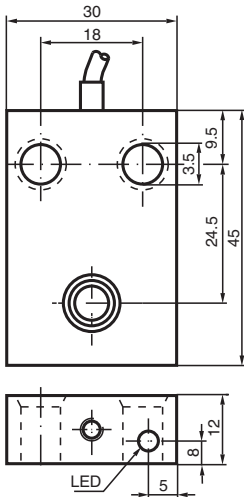


Inductive sensor NJ6-F-E2

- 6 mm flush
- 3-wire DC
- Polarity reversal protected



Dimensions



Technical Data

| General specifications | | |
|-----------------------------|-------|----------------------------|
| Switching function | | Normally open (NO) |
| Output type | | PNP |
| Rated operating distance | s_n | 6 mm |
| Installation | | flush |
| Output polarity | | DC |
| Assured operating distance | s_a | 0 ... 4.8 mm |
| Actual operating distance | s_r | 5.4 ... 6.6 mm typ. |
| Reduction factor r_{Al} | | 0.22 |
| Reduction factor r_{Cu} | | 0.2 |
| Reduction factor r_{304} | | 0.7 |
| Output type | | 3-wire |
| Nominal ratings | | |
| Operating voltage | U_B | 10 ... 60 V DC |
| Switching frequency | f | 0 ... 500 Hz |
| Hysteresis | H | 0 ... 0.3 mm typ. 5 % |
| Reverse polarity protection | | reverse polarity protected |

Release date: 2025-06-06 Date of issue: 2025-06-06 Filename: 024681_eng.pdf

Technical Data

| | | |
|---|-------|---|
| Short-circuit protection | | pulsing |
| Voltage drop | U_d | $\leq 3 \text{ V}$ |
| Operating current | I_L | 0 ... 200 mA |
| Off-state current | I_r | $\leq 0.5 \text{ mA}$ |
| No-load supply current | I_0 | $\leq 20 \text{ mA}$ |
| Time delay before availability | t_v | $\leq 15 \text{ ms}$ |
| Switching state indicator | | LED, yellow |
| Functional safety related parameters | | |
| MTTF _d | | 990 a |
| Mission Time (T _M) | | 20 a |
| Diagnostic Coverage (DC) | | 0 % |
| Compliance with standards and directives | | |
| Standard conformity | | |
| Standards | | EN IEC 60947-5-2 |
| Approvals and certificates | | |
| UL approval | | cULus Listed, General Purpose |
| CCC approval | | Certified by China Compulsory Certification (CCC) |
| Ambient conditions | | |
| Ambient temperature | | -25 ... 70 °C (-13 ... 158 °F) |
| Mechanical specifications | | |
| Connection type | | cable |
| Housing material | | PBT |
| Sensing face | | PBT |
| Degree of protection | | IP67 |
| Cable | | |
| Wire end ferrules | | yes |
| Cable diameter | | 4.8 mm ± 0.2 mm |
| Bending radius | | > 10 x cable diameter |
| Material | | PUR |
| Color | | black |
| Number of cores | | 3 |
| Core cross section | | 0.34 mm ² |
| Length | L | 2 m |
| Mass | | 89 g |
| Dimensions | | |
| Height | | 12 mm |
| Width | | 30 mm |
| Length | | 45 mm |

Connection Assignment

