

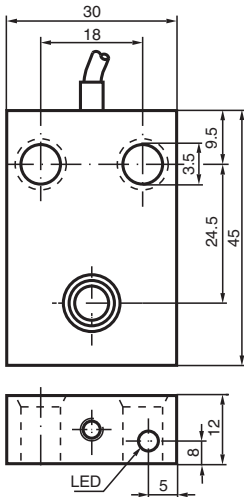


## Inductive sensor NJ6-F-A2-3M

- 6 mm flush
- 4-wire DC
- Polarity reversal protected
- 3 m connection cable



### Dimensions



### Technical Data

General specifications			
Rated operating distance	$s_n$		6 mm
Installation			flush
Output polarity			DC
Assured operating distance	$s_a$		0 ... 4.8 mm
Actual operating distance	$s_r$		5.4 ... 6.6 mm typ.
Reduction factor $r_{Al}$			0.22
Reduction factor $r_{Cu}$			0.2
Reduction factor $r_{304}$			0.7
Output type			4-wire
Nominal ratings			
Operating voltage	$U_B$		10 ... 60 V DC
Switching frequency	$f$		0 ... 500 Hz
Hysteresis	$H$		0 ... 0.3 mm typ. 5 %
Reverse polarity protection			reverse polarity protected
Short-circuit protection			pulsing
Voltage drop	$U_d$		$\leq 3$ V

Release date: 2025-06-05 Date of issue: 2025-06-05 Filename: 037199\_eng.pdf

## Technical Data

Operating current	$I_L$	0 ... 200 mA
No-load supply current	$I_0$	$\leq 20$ mA
Time delay before availability	$t_v$	$\leq 15$ ms
Switching state indicator		LED, yellow
<b>Functional safety related parameters</b>		
MTTF <sub>d</sub>		690 a
Mission Time (T <sub>M</sub> )		20 a
Diagnostic Coverage (DC)		0 %
<b>Compliance with standards and directives</b>		
Standard conformity		
Standards		EN IEC 60947-5-2
<b>Approvals and certificates</b>		
UL approval		cULus Listed, General Purpose
CCC approval		Certified by China Compulsory Certification (CCC)
<b>Ambient conditions</b>		
Ambient temperature		-25 ... 70 °C (-13 ... 158 °F)
<b>Mechanical specifications</b>		
Connection type		cable
Housing material		PBT
Sensing face		PBT
Degree of protection		IP67
<b>Cable</b>		
Wire end ferrules		yes
Cable diameter		4.8 mm $\pm$ 0.2 mm
Bending radius		> 10 x cable diameter
Material		PUR
Color		black
Number of cores		4
Core cross section		0.34 mm <sup>2</sup>
Length	L	3 m
Mass		129 g
<b>Dimensions</b>		
Height		30 mm
Width		45 mm
Length		12 mm

## Connection

