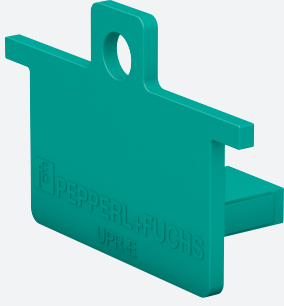


End Cap for Universal Power Rail

UPR-E



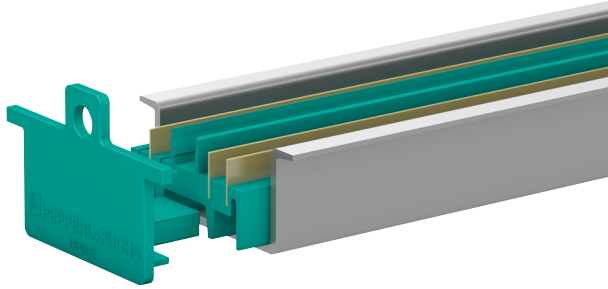
- Termination of DIN mounting rail
- Suitable for Power Rail UPR-**-*
- Suitable for profile rail K-DUCT

End cap for universal power rail UPR-**-*

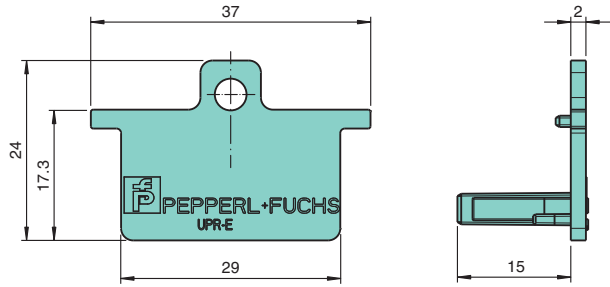
Function

The end cap mounts in the 35 mm DIN mounting rail acc. to DIN EN 60715. The end cap is used to cover the end of the Power Rail.

Assembly



Dimensions



Technical Data

Ambient conditions	
Ambient temperature	-40 ... 70 °C (-40 ... 158 °F)
Mechanical specifications	
Material	Polycarbonate
Mass	approx. 10 g
Dimensions	17 x 37 x 24 mm (0.67 x 1.46 x 0.95 inch)
Mounting	on 35 mm DIN mounting rail acc. to EN 60715:2001
General information	
Packing unit	10 item(s)