

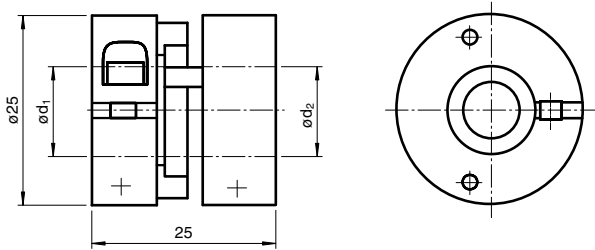
Coupling

9410 6*6

■ Precision coupling

Precision coupling

Dimensions



Technical Data

Mechanical specifications

Shaft diameter	d1 = 6 mm , d2 = 6 mm
Material	Delrin 107, AlMgSi1, hard coated
Mass	25 g
Rotational speed	max. 15000 min ⁻¹
Max. torque	1 Nm
Tightening torque, fastening screws	1.3 Nm
Radial offset	max. ± 0.5 mm
Axial offset	max. ± 0.3 mm
Angle error	max. ± 1.5 °
Torsional rigidity	50 Nm / rad
Moment of inertia	20 kg m ² x 10 ⁻⁷
Mounting	clamping flange

Release date: 2022-12-10 Date of issue: 2022-12-12 Filename: 045020_eng.pdf