

Coupling

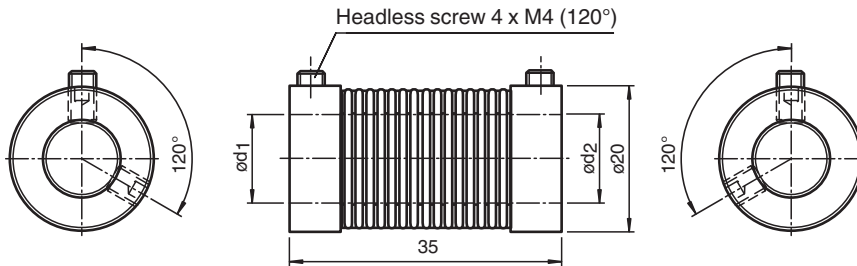
9409 10*10



- Backlash-free, angle synchronous rotation transmission
- Very high torsion spring stiffness
- Material stainless steel and anodized aluminum

Bellows coupling

Dimensions



Technical Data

Ambient conditions	
Ambient temperature	-30 ... 120 °C (-22 ... 248 °F)
Mechanical specifications	
Shaft diameter	d1 = 10 mm , d2 = 10 mm
Material	
Flange	anodized aluminum
Bellows	Stainless steel
Mass	approx. 16 g
Rotational speed	max. 10000 min ⁻¹
Max. torque	1 Nm
Tightening torque, fastening screws	1.5 Nm
Radial offset	max. ± 0.3 mm
Axial offset	max. ± 0.5 mm
Angle error	max. ± 4 °
Torsion spring stiffness	140 Nm / rad
Radial spring stiffness	10 N / mm
Moment of inertia	9 g cm ²

Release date: 2022-12-07 Date of issue: 2022-12-12 Filename: 045024_eng.pdf