

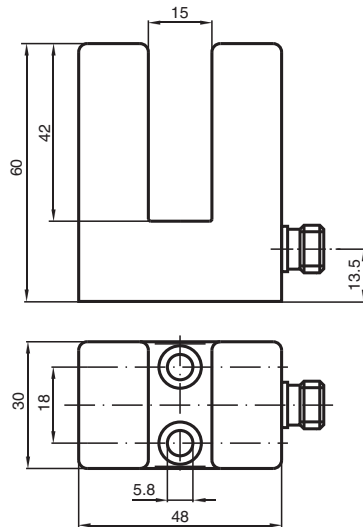
Inductive slot sensor

SJ15-A2-V1

- 15 mm slot width
- 4-wire DC



Dimensions



Technical Data

General specifications

Switching function	complementary
Output type	PNP
Slot width	15 mm
Depth of immersion (lateral)	17 ... 20 mm
Output polarity	DC
Output type	4-wire

Nominal ratings

Nominal voltage	U_o	8 V
Operating voltage	U_B	10 ... 30 V DC
Switching frequency	f	0 ... 500 Hz
Reverse polarity protection		reverse polarity protected
Short-circuit protection		pulsing
Voltage drop	U_d	≤ 3 V
Operating current	I_L	0 ... 200 mA
No-load supply current	I_o	≤ 20 mA

Functional safety related parameters

MTTF _d	1136 a
Mission Time (T _M)	20 a
Diagnostic Coverage (DC)	0 %

Compliance with standards and directives

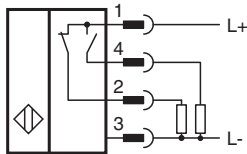
Standard conformity

Release date: 2024-05-27 Date of issue: 2024-05-28 Filename: 087232_eng.pdf

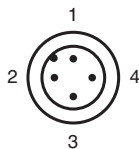
Technical Data

Standards	EN IEC 60947-5-2
Approvals and certificates	
UL approval	cULus Listed, General Purpose
CCC approval	CCC approval / marking not required for products rated ≤36 V
Ambient conditions	
Ambient temperature	-25 ... 70 °C (-13 ... 158 °F)
Mechanical specifications	
Connection type	Connector plug
Housing material	PBT
Degree of protection	IP67
Connector	
Threading	M12 x 1
Number of pins	4
Mass	105 g
Dimensions	
Height	60 mm
Width	30 mm
Length	48 mm

Connection



Connection Assignment



Wire colors in accordance with EN 60947-5-2

1	BN	(brown)
2	WH	(white)
3	BU	(blue)
4	BK	(black)