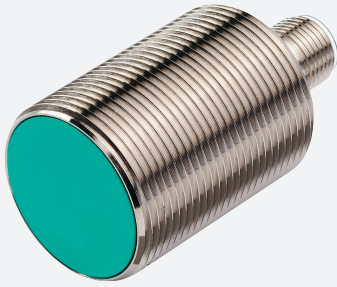


Inductive sensor

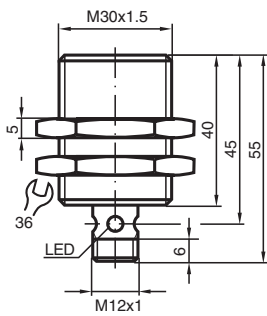
NCB10-30GM40-Z1-V1



- 10 mm flush
- 2-wire DC



Dimensions



Technical Data

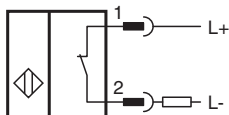
| General specifications | | |
|-----------------------------|-------|---------------------------|
| Switching function | | Normally closed (NC) |
| Output type | | Two-wire |
| Rated operating distance | s_n | 10 mm |
| Installation | | flush |
| Output polarity | | DC |
| Assured operating distance | s_a | 0 ... 8.1 mm |
| Actual operating distance | s_r | 9 ... 11 mm typ. |
| Reduction factor r_{Al} | | 0.32 |
| Reduction factor r_{Cu} | | 0.28 |
| Reduction factor r_{304} | | 0.7 |
| Output type | | 2-wire |
| Nominal ratings | | |
| Operating voltage | U_B | 5 ... 60 V |
| Switching frequency | f | 0 ... 150 Hz |
| Hysteresis | H | 1 ... 10 % typ. 5 % |
| Reverse polarity protection | | reverse polarity tolerant |

Release date: 2025-06-06 Date of issue: 2025-06-06 Filename: 089271_eng.pdf

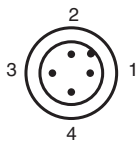
Technical Data

| | | |
|---|-------|---|
| Short-circuit protection | | pulsing |
| Voltage drop | U_d | ≤ 5 V |
| Operating current | I_L | 2 ... 100 mA |
| Lowest operating current | I_m | 2 mA |
| Off-state current | I_r | 0 ... 0.5 mA typ. |
| Switching state indicator | | Multihole-LED, yellow |
| Compliance with standards and directives | | |
| Standard conformity | | |
| Standards | | EN IEC 60947-5-2 |
| Approvals and certificates | | |
| UL approval | | cULus Listed, General Purpose |
| CCC approval | | Certified by China Compulsory Certification (CCC) |
| Ambient conditions | | |
| Ambient temperature | | -25 ... 70 °C (-13 ... 158 °F) |
| Mechanical specifications | | |
| Connection type | | Connector plug |
| Housing material | | Stainless steel 1.4305 / AISI 303 |
| Sensing face | | PBT |
| Degree of protection | | IP67 |
| Connector | | |
| Threading | | M12 x 1 |
| Number of pins | | 4 |
| Mass | | 112 g |
| Dimensions | | |
| Length | | 40 mm |
| Diameter | | 30 mm |

Connection



Connection Assignment



Wire colors in accordance with EN 60947-5-2

| | | |
|---|----|---------|
| 1 | BN | (brown) |
| 2 | WH | (white) |
| 3 | BU | (blue) |
| 4 | BK | (black) |