



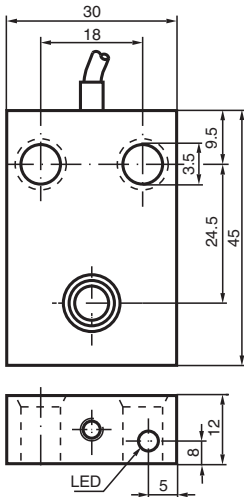
Inductive sensor

NJ10-F-E2-10M-Y89586

- 10 mm non-flush
- 3-wire DC



Dimensions



Technical Data

| General specifications | | | |
|-----------------------------|-------|--|----------------------------|
| Rated operating distance | s_n | | 10 mm |
| Installation | | | non-flush |
| Output polarity | | | DC |
| Assured operating distance | s_a | | 0 ... 8.1 mm |
| Actual operating distance | s_r | | 5.4 ... 6.6 mm typ. |
| Reduction factor r_{Al} | | | 0.22 |
| Reduction factor r_{Cu} | | | 0.2 |
| Reduction factor r_{304} | | | 0.7 |
| Output type | | | 3-wire |
| Nominal ratings | | | |
| Operating voltage | U_B | | 10 ... 60 V DC |
| Switching frequency | f | | 0 ... 250 Hz |
| Hysteresis | H | | 0 ... 0.3 % typ. 0.1 % |
| Reverse polarity protection | | | reverse polarity protected |
| Short-circuit protection | | | pulsing |
| Voltage drop | U_d | | ≤ 3 V |

Release date: 2025-06-05 Date of issue: 2025-06-05 Filename: 089586_eng.pdf

Technical Data

| | | |
|---|-------|---|
| Operating current | I_L | 0 ... 200 mA |
| Off-state current | I_r | ≤ 0.5 mA |
| No-load supply current | I_0 | ≤ 20 mA |
| Time delay before availability | t_v | ≤ 15 ms |
| Switching state indicator | | LED, yellow |
| Functional safety related parameters | | |
| MTTF _d | | 990 a |
| Mission Time (T _M) | | 20 a |
| Diagnostic Coverage (DC) | | 0 % |
| Compliance with standards and directives | | |
| Standard conformity | | |
| Standards | | EN IEC 60947-5-2 |
| Approvals and certificates | | |
| UL approval | | cULus Listed, General Purpose |
| CCC approval | | Certified by China Compulsory Certification (CCC) |
| Ambient conditions | | |
| Ambient temperature | | -25 ... 70 °C (-13 ... 158 °F) |
| Mechanical specifications | | |
| Connection type | | cable |
| Housing material | | PBT |
| Sensing face | | PBT |
| Degree of protection | | IP67 |
| Cable | | |
| Wire end ferrules | | yes |
| Cable diameter | | 4.8 mm \pm 0.2 mm |
| Bending radius | | > 10 x cable diameter |
| Material | | PUR |
| Color | | black |
| Number of cores | | 3 |
| Core cross section | | 0.34 mm ² |
| Length | L | 10 m |
| Mass | | 340 g |
| Dimensions | | |
| Height | | 30 mm |
| Width | | 45 mm |
| Length | | 12 mm |

Connection Assignment

