



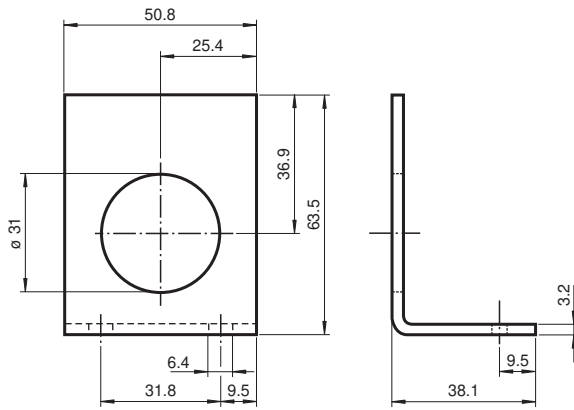
Mounting bracket

AB-30

- Retainer for all cylindrical sensors with M30 thread

Mounting aid

Dimensions



Technical Data

General specifications

Inside diameter 30 mm

Mechanical specifications

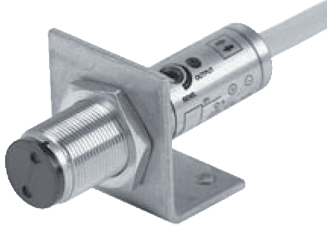
Material Stainless steel

Dimensions 63.5 mm x 50.8 mm x 38.1 mm

Release date: 2022-06-28 Date of issue: 2022-06-28 Filename: 090011_eng.pdf

Mounting

Using the mounting aid cylindrical sensors are fast and easy to fit. Use the nuts included with the sensor for attachment.



Sensor fitted inside the mounting aid