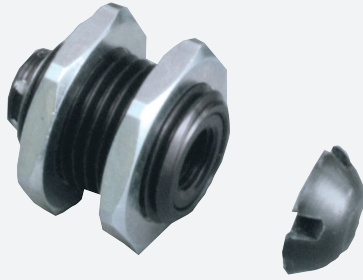


Mounting aid

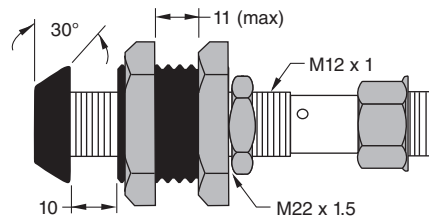
CM-12



- Cushioned Mounting Bracket
- For use with 12 mm diameter sensors
- Maximum overtravel: 10.4 mm

Cushioned mounting bracket

Dimensions



Technical Data

General specifications

Inside diameter 12 mm

Mechanical specifications

Material
Sleeves: anodized aluminum
Jam nuts: nickel-plated metal
End cap: fiberglass reinforced nylon

Release date: 2020-06-29 Date of issue: 2020-06-29 Filename: 091458_eng.pdf

Function

The cushioned mounting bracket provides protection against accidental target contact for embeddable standard inductive sensors.