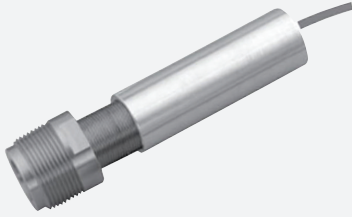


Ultrasonic sensor

UC2000-30GM-IU-V1-HB

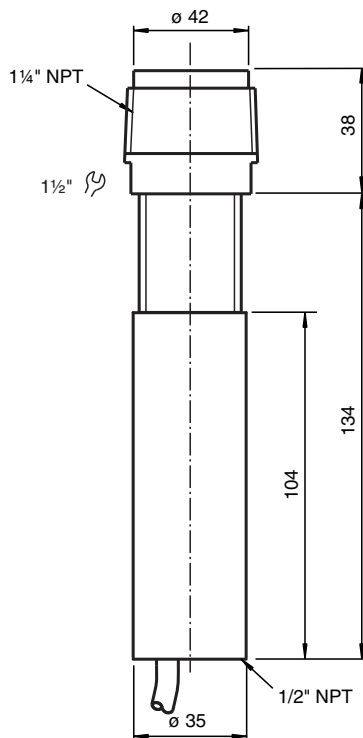


- Parameterization interface for the application-specific adjustment of the sensor setting via the service program ULTRA 3000
- Analog current and voltage output
- Adjustable acoustic power and sensitivity
- Temperature compensation
- UL certified for Class I/Div 2 environments

Single head system



Dimensions



Technical Data

General specifications

Sensing range	80 ... 2000 mm
Adjustment range	120 ... 2000 mm

Release date: 2025-06-12 Date of issue: 2025-06-14 Filename: 094540_eng.pdf

Technical Data

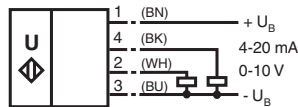
Dead band	0 ... 80 mm	
Standard target plate	100 mm x 100 mm	
Transducer frequency	approx. 180 kHz	
Response delay	65 ms minimum 195 ms factory setting	
Indicators/operating means		
LED green	solid: Power-on flashing: Standby mode or program function object detected	
LED yellow 1	solid: object in evaluation range flashing: program function	
LED yellow 2	solid: object in detection range flashing: program function	
LED red	solid: temperature/program plug not connected flashing: fault or program function object not detected	
Temperature/teach-in connector	Temperature compensation , Evaluation range programming , output function setting	
Electrical specifications		
Operating voltage	U_B	10 ... 30 V DC , ripple 10 % _{SS}
Power consumption	P_0	≤ 900 mW
Interface		
Interface type	RS 232, 9600 Bit/s , no parity, 8 data bits, 1 stop bit	
Input/Output		
Synchronization frequency		
Common mode operation	max. 30 Hz	
Multiplex operation	≤ 30/n Hz, n = number of sensors	
Output		
Output type	1 current output 4 ... 20 mA 1 voltage output 0 ... 10 V	
Resolution	evaluation range [mm]/4000, but ≥ 0.35 mm	
Deviation of the characteristic curve	≤ 0.2 % of full-scale value	
Repeat accuracy	≤ 0.1 % of full-scale value	
Load impedance	current output: ≤ 500 Ohm voltage output: ≥ 1000 Ohm	
Temperature influence	≤ 2 % from full-scale value (with temperature compensation) ≤ 0.2 %/K (without temperature compensation)	
Compliance with standards and directives		
Standard conformity		
Standards	EN IEC 60947-5-2:2020 IEC 60947-5-2:2019 EN 60947-5-7:2003 IEC 60947-5-7:2003	
Approvals and certificates		
UL approval		
Ordinary Location	E87056	
Hazardous Location	E199034	
Control drawing	116-0168	
CSA approval		
Ordinary Location	1007121	
CCC approval	CCC approval / marking not required for products rated ≤36 V	
Ambient conditions		
Ambient temperature	-25 ... 70 °C (-13 ... 158 °F)	
Storage temperature	-40 ... 85 °C (-40 ... 185 °F)	
Mechanical specifications		
Connection type	Cable connector , M12 x 1 , 5-pin , 4-wire	
Degree of protection	IP65	
Material		
Housing	1.4303 stainless steel plastic parts PBT	

Technical Data

Transducer	epoxy resin/hollow glass sphere mixture; polyurethane foam
Dimensions	
Length	172 mm
Diameter	35 mm
Note	Individual components: UC-2000-30GM-IUR2-V15; V1-G-2M-PVC; M-106 impact adapter; ADAPT-ALUM*-M30X1/2" NPT/HB****

Connection Assignment

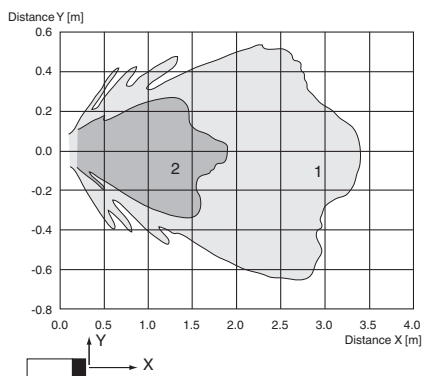
Standard symbol/Connection:
(version IU)



Core colours in accordance with EN 60947-5-2.

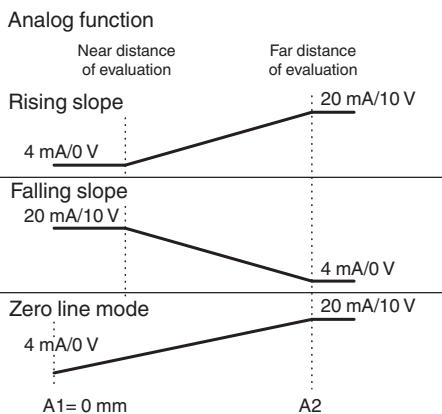
Characteristic Curve

Characteristic response curve



Curve 1: flat surface 100 mm x 100 mm
Curve 2: round bar, Ø 25 mm

Analogue output function



Release date: 2025-06-12 Date of issue: 2025-06-14 Filename: 094540_eng.pdf

Programming

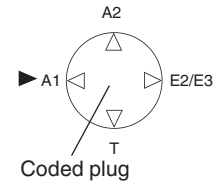
Programming procedure

The sensor features 2 programmable analog outputs with programmable evaluation range. Programming the evaluation range and the operating mode is done either via the sensor's RS232 interface and ULTRA3000 software (see the ULTRA3000 software description) or by means of the programming plug at the sensor's back end which is described here.



Programming of Evaluation Range

1. Disconnect supply voltage
2. Remove the programming plug to activate program mode.
3. Reconnect supply voltage (Reset)
4. Place the target at the desired position for A1
5. Momentarily insert the programming plug in position A1 and then remove. This will program the position A1.
6. Place the target at the desired position for A2
7. Momentarily insert the programming plug in position A2 and then remove. This will program the position A2.



Notes:

- Removing the programming plug saves the new position into the device memory.
- The programming status is indicated by the LED. A flashing green LED indicates that the target is detected; a flashing red LED indicates that no target is detected.

Programming the Operation Mode

If the program mode is still activated, continue at number 4. If not, activate program mode by performing the sequence numbers 1 to 3.

1. Disconnect supply voltage
2. Remove the programming plug to activate program mode.
3. Reconnect supply voltage (Reset)
4. Insert the programming plug in position E2/E3. By removing and reinserting the plug, the user can toggle through the three different modes of operation. The selected mode is indicated by the LEDs as shown below:
 - Rising slope mode, LED A2 flashes
 - Falling slope mode, LED A1 flashes
 - Zero line mode, LEDs A1 and A2 flash
5. Once the desired mode is selected, insert the programming plug in position T. This completes the programming procedure and saves the switch points and mode of operation.
6. The sensor now operates in normal mode.

Note:

The programming plug also functions as the temperature compensation. If the programming plug has not been inserted in the T position within 5 minutes, the sensor will return to normal operating mode with the latest saved values, without temperature compensation.

Factory Setting

Factory settings

Operation mode = rising slope mode

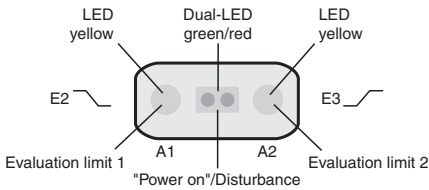
A1 = end of unusable area (see technical data)

A2 = nominal sensing range (see technical data)

Indication

The sensor provides LEDs to indicate various conditions.

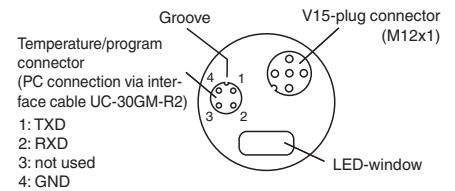
	Green LED	Red LED	Yellow LED A1	Yellow LED A2
During Normal Operation - Temperature compensated - with removed programming plug Interference (e.g. compressed air)	On Off Off	Off On Flashing	Object in evaluation range Object in evaluation range remains in previous state	Object in sensing range Object in sensing range remains in previous state
During Sensor Programming Evaluation limit A1: Object detected No object detected Evaluation limit A2: Object detected No object detected Operation mode: Rising slope mode Falling slope mode Zero line mode	Flashing Off Flashing Off On On On	Off Flashing Flashing Off Off Off Off	Flashing Flashing Off Off Off Flashing Flashing	Off Off Flashing Flashing Flashing Off Flashing
Standby	Flashing	Off	remains in previous state	remains in previous state



Additional Information

Note on communication with the UC-30GM-R2 interface cable

The UC-30GM-R2 interface cable allows for communication with the ultrasonic sensor using ULTRA3000 software. The cable creates a connection between a PC RS-232 interface and the programming plug socket on the sensor. When connecting to the sensor, make certain the plug is lined up correctly; otherwise no communication will be possible. The key of the cable's plug must be aligned to the groove of the socket on the sensor (not with the arrow symbol on the sensor).



Programmable parameters with the ULTRA3000 software

- Evaluation limits A1 and A2
- Operation mode
- Sonic speed
- Temperature offset (The inherent temperature-rise of the sensor can be considered in the temperature compensation)
- Expansion of the unusable area (for suppression of unusable area echoes)
- Reduction of the detection range (for suppression of remote range echoes)
- Time of measuring cycle
- Acoustic power (interference of the burst duration)
- Sensitivity
- Behavior of the sensor in case of echo loss
- Behavior of the sensor in case of a fault
- Average formation via an allowed number of measuring cycles
- Selection of the parameter set, RS 232 or manually

Note:

When connected to a PC and running the ULTRA3000 software, the sensor can act as a long term data logger as well.

Release date: 2025-06-12 Date of issue: 2025-06-14 Filename: 094540_eng.pdf