

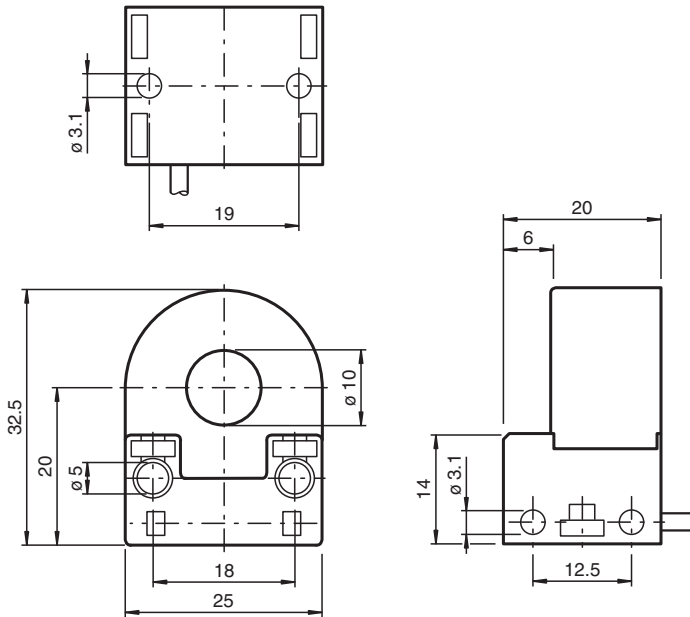
## Inductive ring sensor

### RC10-14-N0

- 10 mm inside diameter



## Dimensions



## Technical Data

### General specifications

Switching function	Normally closed (NC)
Output type	NAMUR
Inside diameter	10 mm
Measuring cylinder	9S20K
Diameter	2.5 mm
Length	4 mm
Output type	2-wire

### Nominal ratings

Nominal voltage	$U_o$	8.2 V ( $R_i$ approx. 1 k $\Omega$ )
Operating voltage	$U_B$	5 ... 25 V
Switching frequency	$f$	0 ... 2000 Hz
Suitable for 2:1 technology		yes, Reverse polarity protection diode not required

Release date: 2025-02-27 Date of issue: 2025-02-27 Filename: 095912\_eng.pdf

## Technical Data

Current consumption		
Measuring plate not detected		min. 3 mA at maximum permissible ambient temperature, the current consumption can drop to 1.6 mA
Measuring plate detected		≤ 1 mA
<b>Functional safety related parameters</b>		
MTTF <sub>d</sub>		6150 a
Mission Time (T <sub>M</sub> )		20 a
Diagnostic Coverage (DC)		0 %
<b>Compliance with standards and directives</b>		
Standard conformity		
NAMUR		EN 60947-5-6:2000 IEC 60947-5-6:1999
Electromagnetic compatibility		NE 21:2007
Standards		EN IEC 60947-5-2
<b>Approvals and certificates</b>		
ATEX approval		
Equipment protection level Gb		PTB 99 ATEX 2128 X
FM approval		
Control drawing		116-0165
UL approval		cULus Listed, General Purpose
<b>Ambient conditions</b>		
Ambient temperature		-20 ... 65 °C (-4 ... 149 °F)
<b>Mechanical specifications</b>		
Connection type		cable
Housing material		PBT
Degree of protection		IP67
Cable		
Wire end ferrules		yes
Cable diameter		2.6 mm ± 0.2 mm
Bending radius		> 10 x cable diameter
Material		PVC
Color		blue
Number of cores		2
Core cross section		0.14 mm <sup>2</sup>
Length	L	2 m
Mass		36 g
Dimensions		
Height		32.5 mm
Width		25 mm
Length		20 mm
<b>General information</b>		
Use in the hazardous area		see instruction manuals

## Connection

