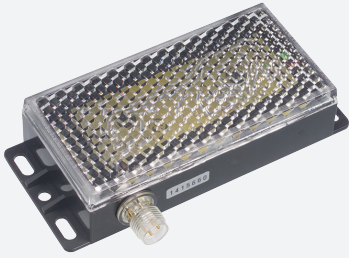
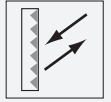


Reflector, heatable REF-HEATER120

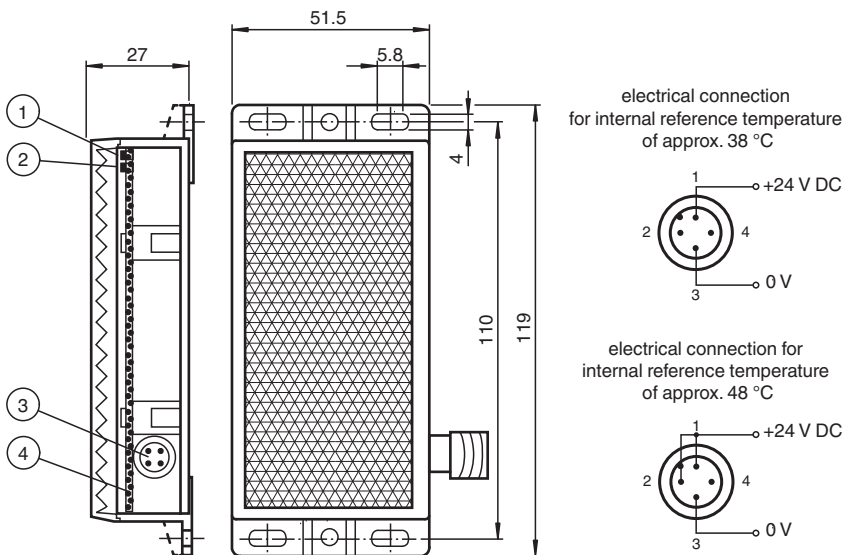


- Mounting holes for simple installation

Reflector, rectangular 120 mm x 51 mm, mounting holes, heatable 24 V DC



Dimensions



1	Green LED, ready indicator
2	Red LED, lights up when heater is active
3	M12x1 plug, 4-pin
4	Temperature sensor

Technical Data

General specifications

Construction type rectangular

Electrical specifications

Operating voltage U_B 24 V DC
 Operating current I_B 200 mA
 Power consumption P_0 max. 6 W

Ambient conditions

Ambient temperature -20 ... 60 °C (-4 ... 140 °F)

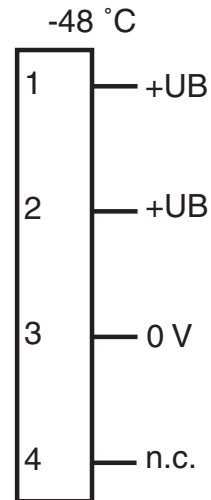
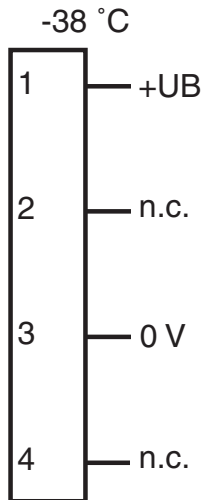
Mechanical specifications

Release date: 2020-03-21 Date of issue: 2020-06-29 Filename: 113964_eng.pdf

Technical Data

Connection	4-pin, M12 x 1 connector
Material	PMMA/ABS
Dimensions	119 mm x 51.5 mm x 27 mm
Mounting	mounting holes

Connection Assignment



Safety Information

CAUTION:

Mount the reflector on a fireproof surface.

Do **not** use the reflector in potentially explosive spaces or near combustibles.