

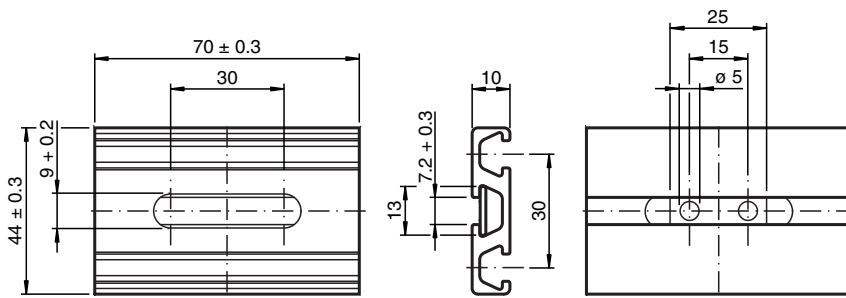


Mounting aid MH 02-L-Y133760

- Suitable for VariKont-L sensors
- Simple and fast mounting
- Sensor can be mounted length or crosswise on the profile section
- Maximum range of adjustment: 60 mm

Mounting aid

Dimensions



Technical Data

Mechanical specifications

Material

Profile rail: aluminum
Plate: aluminum

Mounting

Instruction for installation

- Insert the M5 slotted cylindrical head screws provided in the sensor base and fix the sliding blocks to them and tighten with approx. 3 turns of the screws
- Slide the loosely attached sliding blocks into the profile section
- Position the sensor and fasten the screws

Scope of delivery

Mounting aid MH 02-L-Y133760, consisting of

- 1 profile rail (70 mm) with elongated hole (30 mm)
- 2 sliding blocks (M5) for sensor mounting
- 2 screws cylindric head (M5 x 42/ISO 4762) for sensor mounting
- 1 aluminium plate (25 x 13 x 1,5) for mounting
- 2 stainless steel self-tapping screw with slot (4,2 x 19/ISO 1481) for mounting
- 2 lock washer (4,3 mm/DIN 6797 form A) for mounting