

Inductive sensor

NCB1,5-18GM60-E2-D-V1

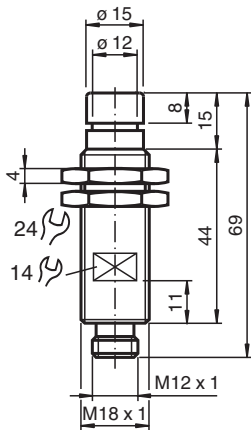


- 1.5 mm flush
- Compression proof up to 350 bar, dynamic on active surface
- For applications in hydraulic cylinder

Inductive sensor



Dimensions



Technical Data

General specifications

Switching function		Normally open (NO)
Output type		PNP
Rated operating distance	s_n	1.5 mm
Installation		flush
Output polarity		DC
Assured operating distance	s_a	0 ... 1.22 mm
Reduction factor r_{Al}		0.3
Reduction factor r_{Cu}		0.2
Reduction factor r_{304}		0.5
Output type		3-wire

Nominal ratings

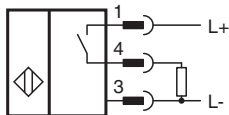
Operating voltage	U_B	10 ... 60 V DC
Switching frequency	f	0 ... 1500 Hz
Hysteresis	H	1 ... 10 % typ. 5 %
Reverse polarity protection		reverse polarity protected
Short-circuit protection		pulsing
Voltage drop	U_d	≤ 3 V

Release date: 2025-06-06 Date of issue: 2025-06-06 Filename: 134439_eng.pdf

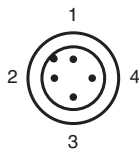
Technical Data

Operating current	I_L	0 ... 200 mA
No-load supply current	I_0	≤ 10 mA
Limit data		
Operating pressure		350 bar (5076.4 psi)
Functional safety related parameters		
MTTF _d		1240 a
Mission Time (T _M)		20 a
Diagnostic Coverage (DC)		0 %
Compliance with standards and directives		
Standard conformity		
Standards		EN IEC 60947-5-2
Approvals and certificates		
UL approval		cULus Listed, General Purpose
CCC approval		Certified by China Compulsory Certification (CCC)
Ambient conditions		
Ambient temperature		-35 ... 80 °C (-31 ... 176 °F)
Mechanical specifications		
Connection type		Connector plug
Housing material		Stainless steel 1.4305 / AISI 303
Sensing face		Epoxy (black)
Degree of protection		IP67
Connector		
Threading		M12 x 1
Number of pins		4
Mass		89 g
Dimensions		
Length		65 mm
Diameter		18 mm

Connection



Connection Assignment

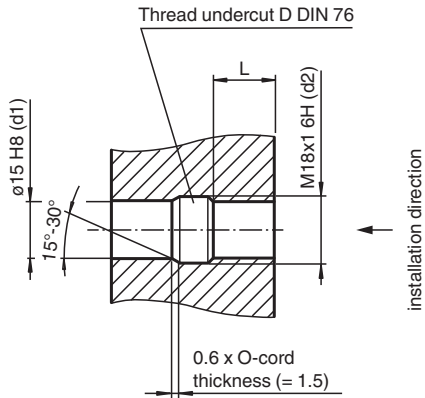


Connection Assignment

Wire colors in accordance with EN 60947-5-2

1	BN	(brown)
2	WH	(white)
3	BU	(blue)
4	BK	(black)

Installation Conditions



L: recommended installation depth: $L \geq 0.8 \times d2$

Installation

Note

Please refer to the technical information about this product at www.pepperl-fuchs.com. This information describes the necessary geometry of the installation space!