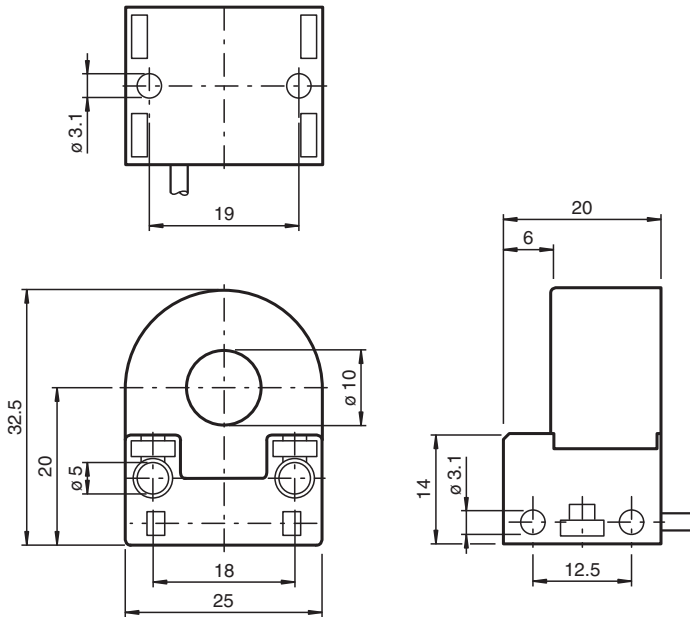


Inductive ring sensor RC10-14-N0-Y180779

- 10 mm inside diameter
- Comfort series
- 2. actual frequency



Dimensions



Technical Data

General specifications

Switching function	Normally closed (NC)
Output type	NAMUR
Inside diameter	10 mm
Measuring cylinder	
Diameter	2.5 mm
Length	4 mm
Output type	2-wire

Nominal ratings

Nominal voltage	U_o	8.2 V (R_i approx. 1 k Ω)
Switching frequency	f	0 ... 2000 Hz
Current consumption		

Release date: 2025-02-27 Date of issue: 2025-02-27 Filename: 180779_eng.pdf

Technical Data

Measuring plate not detected		min. 3 mA at maximum permissible ambient temperature, the current consumption can drop to 1.6 mA
Measuring plate detected		≤ 1 mA
Functional safety related parameters		
MTTF _d		6150 a
Mission Time (T _M)		20 a
Diagnostic Coverage (DC)		0 %
Compliance with standards and directives		
Standard conformity		
NAMUR		EN 60947-5-6:2000 IEC 60947-5-6:1999
Electromagnetic compatibility		NE 21:2007
Standards		EN IEC 60947-5-2
Approvals and certificates		
ATEX approval		
Equipment protection level Gb		PTB 99 ATEX 2128 X
UL approval		cULus Listed, General Purpose
Ambient conditions		
Ambient temperature		-20 ... 65 °C (-4 ... 149 °F)
Mechanical specifications		
Connection type		cable
Housing material		PBT
Degree of protection		IP67
Cable		
Wire end ferrules		yes
Cable diameter		2.6 mm ± 0.2 mm
Bending radius		> 10 x cable diameter
Material		PVC
Color		blue
Number of cores		2
Core cross section		0.14 mm ²
Length	L	2 m
Dimensions		
Height		32.5 mm
Width		25 mm
Length		20 mm
General information		
Use in the hazardous area		see instruction manuals

Connection

