



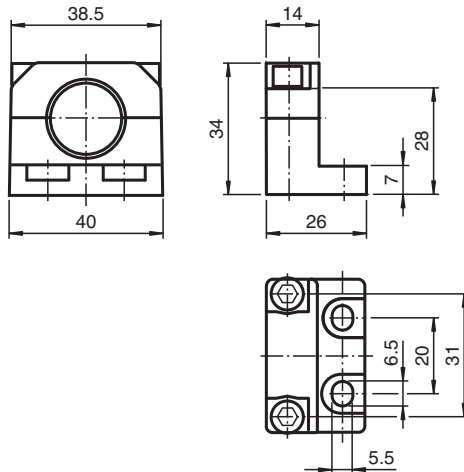
## Mounting flange

### BF-L3M

- Sturdy metallic version

Mounting flange

## Dimensions



## Technical Data

### Ambient conditions

Ambient temperature	-40 ... 150 °C (-40 ... 302 °F)
---------------------	---------------------------------

### Mechanical specifications

Material	powder coated diecast zinc
Mounting screw	stainless steel 1.4404 / AISI 316L
Mass	74 g