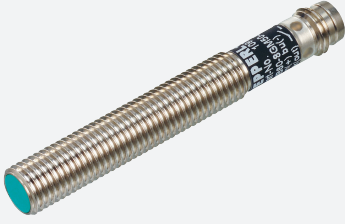


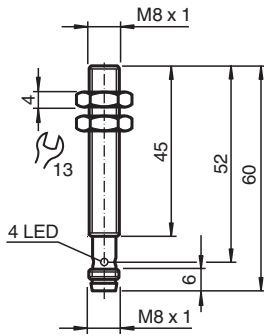
# Magnetic field sensor MB60-8GM50-E2-V3



- Sensing range 60 mm based on DM60-31-15 magnet



## Dimensions



## Technical Data

### General specifications

Switching function		Normally open (NO)
Output type		PNP
Rated operating distance	$s_n$	60 mm
Installation		flush in non-magnetic metal
Output polarity		DC
Assured operating distance	$s_a$	10 ... 48.6 mm
Output type		3-wire

### Nominal ratings

Operating voltage	$U_B$	10 ... 30 V
Switching frequency	$f$	0 ... 5000 Hz
Hysteresis	$H$	1 ... 10 %
Reverse polarity protection		reverse polarity protected
Short-circuit protection		pulsing
Voltage drop	$U_d$	$\leq 2.5$ V
Operating current	$I_L$	0 ... 200 mA
No-load supply current	$I_0$	$\leq 10$ mA
Switching state indicator		Multihole-LED, yellow

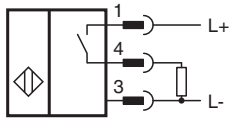
### Functional safety related parameters

MTTF <sub>d</sub>		3909 a
-------------------	--	--------

## Technical Data

Mission Time (T <sub>M</sub> )	20 a
Diagnostic Coverage (DC)	0 %
<b>Compliance with standards and directives</b>	
Standard conformity	
Standards	EN IEC 60947-5-2
<b>Approvals and certificates</b>	
Protection class	III
UL approval	cULus Listed, General Purpose
CCC approval	CCC approval / marking not required for products rated ≤36 V
<b>Ambient conditions</b>	
Ambient temperature	-25 ... 75 °C (-13 ... 167 °F)
<b>Mechanical specifications</b>	
Connection type	Connector plug
Housing material	Stainless steel 1.4404 / AISI 316L
Sensing face	PBT
Degree of protection	IP67
Connector	
Threading	M8 x 1
Number of pins	3
Dimensions	
Length	60 mm
Diameter	8 mm

## Connection



## Connection Assignment

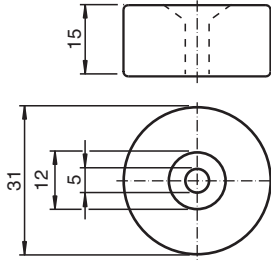


Wire colors in accordance with EN 60947-5-2

1	BN	(brown)
3	BU	(blue)
4	BK	(black)

**Additional Information**

**Magnet DM 60-31-15**



Release date: 2024-10-17 Date of issue: 2024-10-17 Filename: 218379\_eng.pdf