

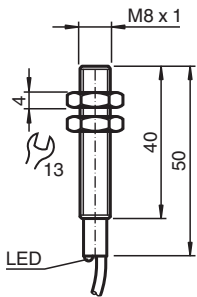
Magnetic field sensor

MB60-8GM50-E2

- Sensing range 60 mm based on DM60-31-15 magnet



Dimensions



Technical Data

General specifications

Switching function		Normally open (NO)
Output type		PNP
Rated operating distance	s_n	60 mm
Installation		flush in non-magnetic metal
Output polarity		DC
Assured operating distance	s_a	10 ... 48.6 mm
Output type		3-wire

Nominal ratings

Operating voltage	U_B	10 ... 30 V
Switching frequency	f	0 ... 5000 Hz
Hysteresis	H	1 ... 10 %
Reverse polarity protection		reverse polarity protected
Short-circuit protection		pulsing
Voltage drop	U_d	≤ 2.5 V
Operating current	I_L	0 ... 200 mA
No-load supply current	I_0	≤ 10 mA
Switching state indicator		LED, yellow

Functional safety related parameters

MTTF _d		3909 a
Mission Time (T _M)		20 a
Diagnostic Coverage (DC)		0 %

Release date: 2024-10-17 Date of issue: 2024-10-17 Filename: 218380_eng.pdf

Technical Data

Compliance with standards and directives

Standard conformity

Standards EN IEC 60947-5-2

Approvals and certificates

Protection class

III

UL approval

cULus Listed, General Purpose

CCC approval

CCC approval / marking not required for products rated ≤ 36 V

Ambient conditions

Ambient temperature

-25 ... 75 °C (-13 ... 167 °F)

Mechanical specifications

Connection type

cable

Housing material

Stainless steel 1.4404 / AISI 316L

Sensing face

PBT

Degree of protection

IP67

Cable

Material

PUR

Core cross section

0.14 mm²

Length

L

2 m

Dimensions

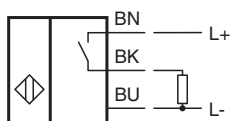
Length

50 mm

Diameter

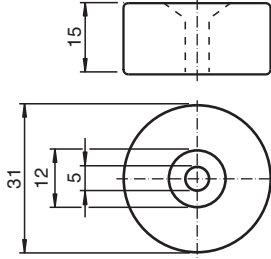
8 mm

Connection



Additional Information

Magnet DM 60-31-15



Release date: 2024-10-17 Date of issue: 2024-10-17 Filename: 218380_eng.pdf