

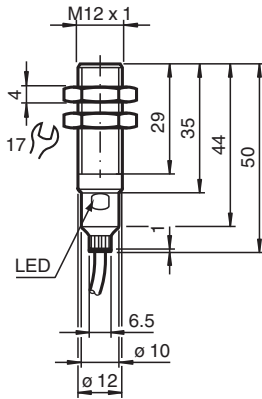
# Magnetic field sensor

## MB60-12GM50-E2

- Sensing range 60 mm based on DM60-31-15 magnet



### Dimensions



### Technical Data

#### General specifications

Switching function		Normally open (NO)
Output type		PNP
Rated operating distance	$s_n$	60 mm
Installation		flush in non-magnetic metal
Output polarity		DC
Assured operating distance	$s_a$	10 ... 48.6 mm
Output type		3-wire

#### Nominal ratings

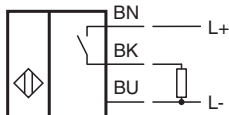
Operating voltage	$U_B$	10 ... 30 V
Switching frequency	$f$	0 ... 5000 Hz
Hysteresis	$H$	1 ... 10 %
Reverse polarity protection		reverse polarity protected
Short-circuit protection		pulsing
Voltage drop	$U_d$	$\leq 2.5$ V
Operating current	$I_L$	0 ... 200 mA
No-load supply current	$I_0$	$\leq 10$ mA

Release date: 2024-10-17 Date of issue: 2024-10-17 Filename: 218382\_eng.pdf

## Technical Data

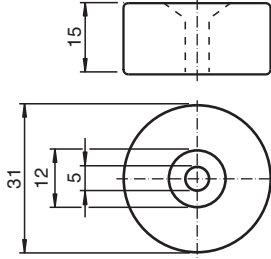
Switching state indicator	LED, yellow	
<b>Functional safety related parameters</b>		
MTTF <sub>d</sub>	2935 a	
Mission Time (T <sub>M</sub> )	20 a	
Diagnostic Coverage (DC)	0 %	
<b>Compliance with standards and directives</b>		
Standard conformity		
Standards	EN IEC 60947-5-2	
<b>Approvals and certificates</b>		
Protection class	II	
UL approval	cULus Listed, General Purpose	
CCC approval	CCC approval / marking not required for products rated ≤36 V	
<b>Ambient conditions</b>		
Ambient temperature	-25 ... 75 °C (-13 ... 167 °F)	
<b>Mechanical specifications</b>		
Connection type	cable	
Housing material	Stainless steel 1.4404 / AISI 316L	
Sensing face	PBT	
Degree of protection	IP67	
Cable		
Material	PUR	
Core cross section	0.34 mm <sup>2</sup>	
Length	L	2 m
Dimensions		
Length	50 mm	
Diameter	12 mm	

## Connection



## Additional Information

### Magnet DM 60-31-15



## Mounting

When installed in magnetic materials,  
a free space must be left.

