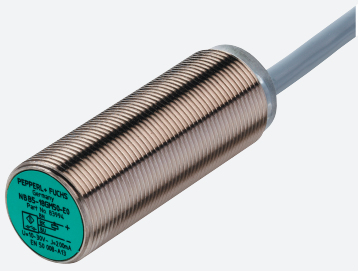


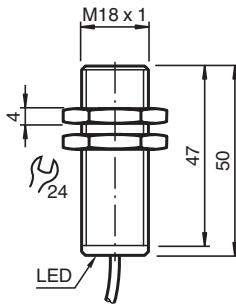
# Inductive sensor NJ5-18GM50-A2



- Comfort series
- 5 mm flush



## Dimensions



## Technical Data

| General specifications      |       |                            |
|-----------------------------|-------|----------------------------|
| Switching function          |       | complementary              |
| Output type                 |       | PNP                        |
| Rated operating distance    | $s_n$ | 5 mm                       |
| Installation                |       | flush                      |
| Output polarity             |       | DC                         |
| Assured operating distance  | $s_a$ | 0 ... 4.05 mm              |
| Reduction factor $r_{Al}$   |       | 0.4                        |
| Reduction factor $r_{Cu}$   |       | 0.35                       |
| Reduction factor $r_{304}$  |       | 0.7                        |
| Output type                 |       | 4-wire                     |
| Nominal ratings             |       |                            |
| Operating voltage           | $U_B$ | 10 ... 60 V                |
| Switching frequency         | $f$   | 0 ... 500 Hz               |
| Hysteresis                  | $H$   | typ. 5 %                   |
| Reverse polarity protection |       | reverse polarity protected |
| Short-circuit protection    |       | pulsing                    |

Release date: 2025-06-04 Date of issue: 2025-06-04 Filename: 222501\_eng.pdf

## Technical Data

|   |       |   |
|---|-------|---|
| Voltage drop                                    | $U_d$ | $\leq 3 \text{ V}$                                |
| Operating current                               | $I_L$ | 0 ... 400 mA                                      |
| Off-state current                               | $I_r$ | 0 ... 0.5 mA                                      |
| No-load supply current                          | $I_0$ | $\leq 15 \text{ mA}$                              |
| Switching state indicator                       |       | all direction LED, yellow                         |
| <b>Functional safety related parameters</b>     |       |   |
| MTTF <sub>d</sub>                               |       | 1000 a  |
| Mission Time (T <sub>M</sub> )                  |       | 20 a  |
| Diagnostic Coverage (DC)                        |       | 0 %   |
| <b>Compliance with standards and directives</b> |       |   |
| Standard conformity                             |       |   |
| Standards                                       |       | EN IEC 60947-5-2                                  |
| <b>Approvals and certificates</b>               |       |   |
| UL approval                                     |       | cULus Listed, General Purpose                     |
| CCC approval                                    |       | Certified by China Compulsory Certification (CCC) |
| <b>Ambient conditions</b>                       |       |   |
| Ambient temperature                             |       | -25 ... 70 °C (-13 ... 158 °F)                    |
| Storage temperature                             |       | -40 ... 85 °C (-40 ... 185 °F)                    |
| <b>Mechanical specifications</b>                |       |   |
| Connection type                                 |       | cable   |
| Housing material                                |       | Stainless steel 1.4305 / AISI 303                 |
| Sensing face                                    |       | PBT   |
| Degree of protection                            |       | IP67  |
| Cable   |       |   |
| Wire end ferrules                               |       | yes   |
| Cable diameter                                  |       | 6.2 mm ± 0.2 mm                                   |
| Bending radius                                  |       | > 10 x cable diameter                             |
| Material  |       | PVC   |
| Color   |       | black   |
| Number of cores                                 |       | 4   |
| Core cross section                              |       | 0.5 mm <sup>2</sup>                               |
| Length  | L     | 2 m   |
| Dimensions                                      |       |   |
| Length  |       | 50 mm   |
| Diameter  |       | 18 mm   |

## Connection

