



## Inductive sensor NCN3-F31K-B3B-B31

- Direct mounting on standard actuators
- A/B node with extended addressing possibility for up to 62 nodes
- Mode of operation, programmable
- Degree of protection IP67
- Communication monitoring, turn-off
- Lead breakage and short-circuit monitoring of the valve
- LEDs for switching state of sensor and solenoid valve

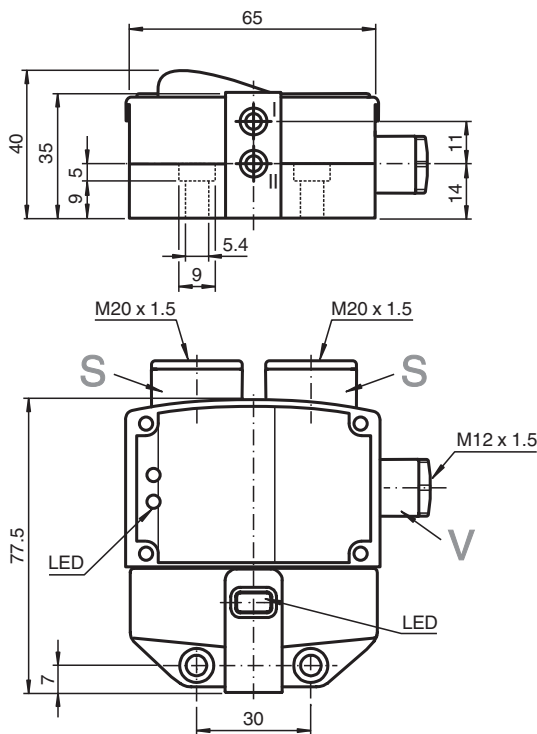
Valve positioner and valve control module



### Installation

The connections to this sensor are sealed with stopping plugs to protect against dirt and moisture. If not all of the connections are used in your application, then seal the remaining stopping plugs on the sensor permanently or check during initial installation and when performing regular maintenance work that the stopping plugs are secure and impermeable. If necessary, tighten the stopping plugs to a torque of 1 Nm.

### Dimensions



### Technical Data

General specifications		
Switching function		Normally open/closed (NO/NC) programmable
Output type		AS-Interface
Rated operating distance	$s_n$	3 mm
Installation		flush mountable
Assured operating distance	$s_a$	0 ... 2.43 mm

Release date: 2025-07-07 Date of issue: 2025-07-07 Filename: 226326\_eng.pdf

## Technical Data

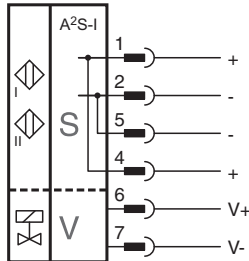
Reduction factor $r_{Al}$		0.5
Reduction factor $r_{Cu}$		0.45
Reduction factor $r_{304}$		1
Reduction factor $r_{S137}$		1.2
Node type		A/B node
AS-Interface specification		V3.0
Required gateway specification		$\geq$ V2.1
<b>Nominal ratings</b>		
Operating voltage	$U_B$	26.5 ... 31.9 V via AS-i bus system
Switching frequency	$f$	0 ... 100 Hz
No-load supply current	$I_0$	$\leq$ 35 mA
<b>Functional safety related parameters</b>		
MTTF <sub>d</sub>		842 a
Mission Time ( $T_M$ )		20 a
Diagnostic Coverage (DC)		0 %
<b>Indicators/operating means</b>		
LED PWR		AS-Interface voltage; LED green
LED IN		switching state (input); LED yellow
LED OUT		binary LED yellow/red yellow: switching state red: lead breakage/short-circuit
<b>Electrical specifications</b>		
Rated operating voltage	$U_e$	26.5 ... 31.6 V from AS-Interface
Rated operating current	$I_e$	100 mA
<b>Compliance with standards and directives</b>		
Standard conformity		
Electromagnetic compatibility		EN 50295:1999-10
Standards		EN IEC 60947-5-2
<b>Approvals and certificates</b>		
UL approval		cULus Listed Load Type: General Purpose Circuitry: Class 2 Power Source Enclosure Type Rating: Type 1 Supply/Switching Voltage: 31.9 V DC
CCC approval		CCC approval / marking not required for products rated $\leq$ 36 V
<b>Ambient conditions</b>		
Ambient temperature		-25 ... 70 °C (-13 ... 158 °F)
<b>Mechanical specifications</b>		
Connection (system side)		screw terminals
Core cross section (system side)		1.5/2.5 mm <sup>2</sup> flexible/rigid
Connection (valve side)		screw terminals
Core cross section (valve side)		1.5/2.5 mm <sup>2</sup> flexible/rigid
Housing material		PBT
Sensing face		PBT
Degree of protection		IP67
Material		
Housing		PBT
Tightening torque, fastening screws		$\leq$ 5 Nm
Tightening torque, housing screws		1 Nm
Tightening torque, cable gland		M20 x 1.5 ; max. 7 Nm M12 x 1.5 ; max. 1.5 Nm
Dimensions		
Height		35.5 mm
Width		65 mm
Length		77.5 mm

## Technical Data

Note

valve voltage limited to 26,4 V max.; valve power 2,5 W max.

## Connection



## Additional Information

### Programming Instructions

Address	00 preset, alterable via Busmaster or programming units
IO-code	D
ID-code	A
ID1-code	7
ID2-code	E

### Data bit

Bit	Function
D0	valve status (0=valve OFF, 1=valve ON)
D1	valve fault <sup>1)</sup> (0=lead breakage/short circuit; 1=no fault)
D2	switch output sensor 1 <sup>2)</sup> (0=damped; 1=undamped)
D3	switch output sensor 2 <sup>2)</sup> (0=damped; 1=undamped)

### Parameter bit

Bit	Function
P0	Watchdog (0=inactive; 1=active) <sup>3)</sup>
P1	switching element function sensor II <sup>4)</sup> 0=NO; 1= NC)
P2	switching element function sensor I <sup>4)</sup> 0=NO; 1= NC)
P3	not used

- 1) Verification only with actuated valve (D0=1)
- 2) Applies to NC function (P1/P2=1; preset), with NO function (P1/P2=0) reversed characteristics
- 3) Watchdog active: valve voltage drops with the occurrence of an AS-I communication fault