

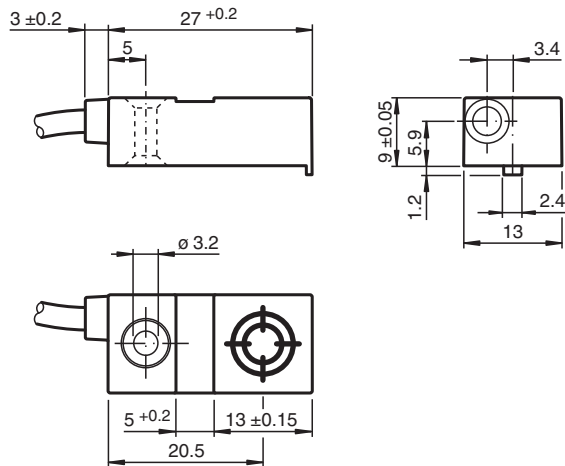


# Inductive sensor NBN6-F29B-E2

- 3-wire DC
- 6 mm non-flush



## Dimensions



## Technical Data

General specifications			
Rated operating distance	$s_n$	6 mm	
Installation		for non-flush mounting	
Output polarity		DC	
Assured operating distance	$s_a$	0 ... 4.86 mm	
Reduction factor $r_{Al}$		0.4	
Reduction factor $r_{Cu}$		0.3	
Reduction factor $r_{304}$		0.7	
Output type		3-wire	
Nominal ratings			
Operating voltage	$U_B$	10 ... 30 V DC	
Switching frequency	$f$	0 ... 500 Hz	
Hysteresis	$H$	typ. 5 %	
Reverse polarity protection		reverse polarity protected	
Short-circuit protection		pulsing	
Voltage drop	$U_d$	≤ 3 V	
Operating current	$I_L$	0 ... 100 mA	

Release date: 2025-02-27 Date of issue: 2025-02-27 Filename: 226468\_eng.pdf

## Technical Data

Off-state current	$I_r$	0 ... 0.5 mA typ. 0.1 $\mu$ A at 25 °C
No-load supply current	$I_0$	$\leq$ 10 mA
Time delay before availability	$t_v$	$\leq$ 5 ms
Switching state indicator		LED, yellow
<b>Functional safety related parameters</b>		
MTTF <sub>d</sub>		1340 a
Mission Time (T <sub>M</sub> )		20 a
Diagnostic Coverage (DC)		0 %
<b>Compliance with standards and directives</b>		
Standard conformity		
Standards		EN IEC 60947-5-2
<b>Approvals and certificates</b>		
UL approval		cULus Listed, General Purpose, Class 2 Power Source
CCC approval		CCC approval / marking not required for products rated $\leq$ 36 V
<b>Ambient conditions</b>		
Ambient temperature		-25 ... 70 °C (-13 ... 158 °F)
<b>Mechanical specifications</b>		
Connection type		cable
Housing material		PC
Degree of protection		IP67
Cable		
Wire end ferrules		yes
Cable diameter		3.5 mm $\pm$ 0.2 mm
Bending radius		> 10 x cable diameter
Material		PVC
Color		grey
Number of cores		3
Core cross section		0.14 mm <sup>2</sup>
Length	L	2 m
Dimensions		
Height		9 mm
Width		13 mm
Length		27 mm

## Connection

