

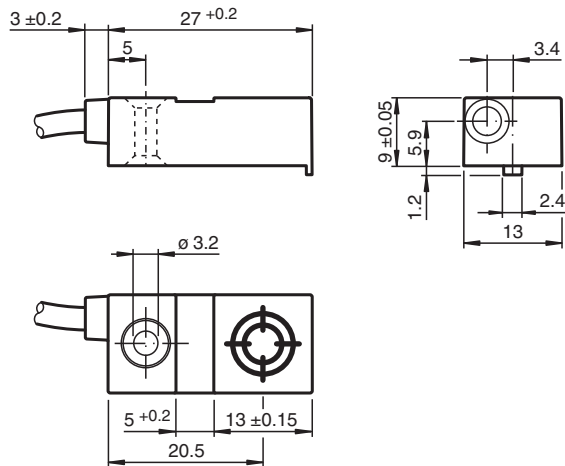


Inductive sensor NBN6-F29B-E3

- 3-wire DC
- 6 mm non-flush



Dimensions



Technical Data

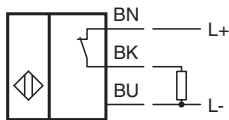
General specifications			
Rated operating distance	s_n	6 mm	
Installation		for non-flush mounting	
Output polarity		DC	
Assured operating distance	s_a	0 ... 4.86 mm	
Reduction factor r_{Al}		0.4	
Reduction factor r_{Cu}		0.3	
Reduction factor r_{304}		0.7	
Output type		3-wire	
Nominal ratings			
Operating voltage	U_B	10 ... 30 V DC	
Switching frequency	f	0 ... 500 Hz	
Hysteresis	H	typ. 5 %	
Reverse polarity protection		reverse polarity protected	
Short-circuit protection		pulsing	
Voltage drop	U_d	≤ 3 V	
Operating current	I_L	0 ... 100 mA	

Release date: 2025-02-27 Date of issue: 2025-02-27 Filename: 226469_eng.pdf

Technical Data

Off-state current	I_r	0 ... 0.5 mA typ. 0.1 μ A at 25 °C
No-load supply current	I_0	\leq 10 mA
Time delay before availability	t_v	\leq 5 ms
Switching state indicator		LED, yellow
Functional safety related parameters		
MTTF _d		1340 a
Mission Time (T _M)		20 a
Diagnostic Coverage (DC)		0 %
Compliance with standards and directives		
Standard conformity		
Standards		EN IEC 60947-5-2
Approvals and certificates		
UL approval		cULus Listed, General Purpose, Class 2 Power Source
CCC approval		CCC approval / marking not required for products rated \leq 36 V
Ambient conditions		
Ambient temperature		-25 ... 70 °C (-13 ... 158 °F)
Mechanical specifications		
Connection type		cable
Housing material		PC
Degree of protection		IP67
Cable		
Wire end ferrules		yes
Cable diameter		3.5 mm \pm 0.2 mm
Bending radius		> 10 x cable diameter
Material		PVC
Color		grey
Number of cores		3
Core cross section		0.14 mm ²
Length	L	2 m
Dimensions		
Height		9 mm
Width		13 mm
Length		27 mm

Connection Assignment



Release date: 2025-02-27 Date of issue: 2025-02-27 Filename: 226469_eng.pdf