



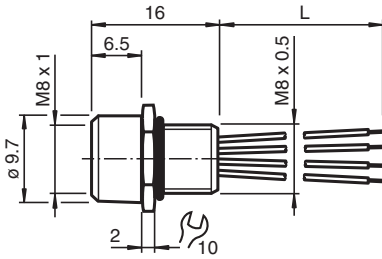
Receptacles V3-M8-500

- Front/screw mounting
- Halogen-free stranded wires
- Degree of protection IP67

3-pin M8 receptacle



Dimensions



Dimension values see data table.
Image and drawing are generic for this device type and may deviate from the specific variant.

Technical Data

General specifications

Connector 1

Connection	socket
Construction type	M8
Style	straight
Locking	screw connection
Number of pins	3
Coding	A-coded

Connector 2

Connection	cable end
------------	-----------

Electrical specifications

Operating voltage	U_B	max. 48 V AC / 60 V DC
Operating current	I_B	max. 4 A
Volume resistance		< 3 m Ω

Conformity

Degree of protection	EN 60529
Plug connection	connector M8 x 1 : IEC 61076-2-104
Flammability	IEC 60332-1-2
Halogen-free	IEC 60754-1

Approvals and certificates

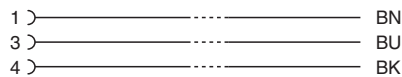
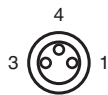
UL File Number	E191152
----------------	---------

Release date: 2025-02-17 Date of issue: 2025-02-17 Filename: 226472_eng.pdf

Technical Data

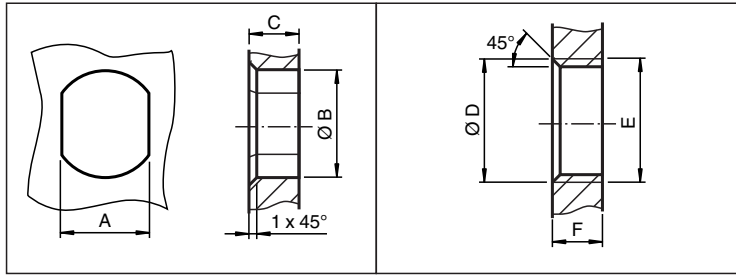
Ambient conditions		
Ambient temperature		
Plug connector		-25 ... 85 °C (-13 ... 185 °F)
Cable, fixed installation		-40 ... 105 °C (-40 ... 221 °F)
Cable, flexing		-10 ... 105 °C (14 ... 221 °F)
Pollution degree		3
Mechanical specifications		
Plug connector		
Tightening torque		0.4 Nm
Mating cycles		min. 100
Degree of protection		IP67
Connection		tinned copper single leads, Ø1.5 ±0.1 mm
Cable		
Number of cores		3
Core cross section		0.25 mm ²
Cores color		Core 1: brown Core 3: blue Core 4: black
Core construction		7 x 0.2 mm Ø AWG 24
Length	L	500 mm
Installation		Front mounting M8 , tightening torque: 0.8 ... 1 Nm
Mass		12 g
Material		
Halogen-free		yes
Plug connector		
Screw connection		brass, nickel-plated
Seal		FKM
Contact surface		gold plated (Au)
Flammability		HB
Cable		
Core insulation		PVC
General information		
Scope of delivery		locknut not included

Connection Assignment



Release date: 2025-02-17 Date of issue: 2025-02-17 Filename: 226472_eng.pdf

Mounting



	A	B	C	D	E	F
M8	7.1 ^{+0.1}	Ø 8.2 ^{+0.1}	2 - 4 mm	-	M8x0.5	2 - 4 mm
M12	11 ^{+0.1}	Ø 12.2 ^{+0.1}	< 4 mm	-	M12x1	< 4.5 mm
M16	13.5 ^{+0.1}	Ø 16.1	< 4.5 mm	Ø 17 ^{+0.2}	M16x1.5	> 2.5 mm
M20	13.5 ^{+0.1}	Ø 20.1	-	Ø 20 ^{+0.2}	M20x1.5	< 6 mm
PG9	13.5 ^{+0.1}	Ø 15.3 ^{+0.1}	< 4.5 mm	Ø 16	PG9	> 2.5 mm
PG13.5	18.8 ^{+0.1}	Ø 20.5 ^{+0.1}	-	Ø 22 ^{±0.1}	PG13.5	-

Release date: 2025-02-17 Date of issue: 2025-02-17 Filename: 226472_eng.pdf