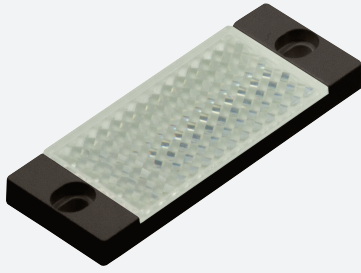
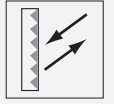


Reflector

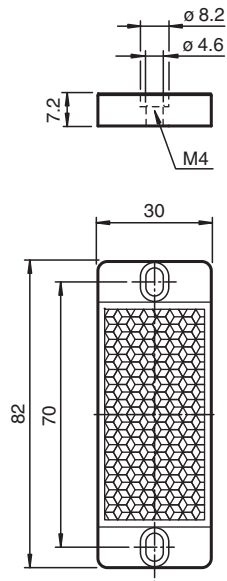
REF-H30x60



- Mounting holes for simple installation

Reflector, rectangular 82 mm x 30 mm, mounting holes

Dimensions



Technical Data

General specifications

Construction type rectangular

Ambient conditions

Ambient temperature -40 ... 70 °C (-40 ... 158 °F)

Mechanical specifications

Material PMMA/ABS , black

Dimensions 30 mm x 80 mm x 7.2 mm

Mounting mounting holes