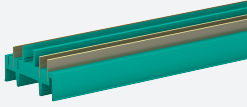


Insert for DIN Mounting Rail

UPR-INS-03



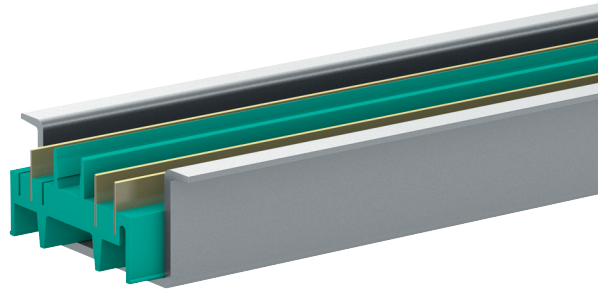
- 3-conductor insert in 35 mm DIN mounting rail
- Suitable for 35 mm DIN mounting rail UPR-MR
- Suitable for profile rail K-DUCT
- Standard length 2 m (6 foot), simple to customize to application space

Insert for 35 mm DIN mounting rail

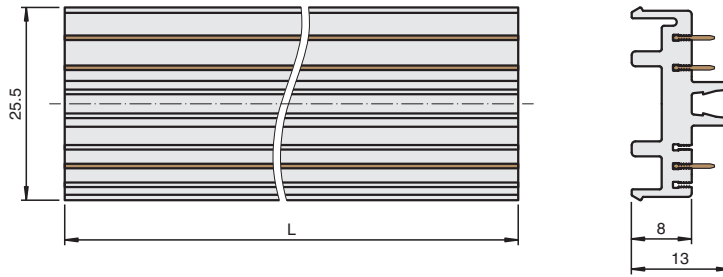
Function

The insert consists of plastic and has integrated gold-plated conductors. The insert is installed into the DIN mounting rail UPR-MR. The component has two conductors for power and one conductor for collective error messaging. The component comes in 2 m segments but can be cut to any size. The DIN mounting rail UPR-MR and the insert UPR-INS-** form the Power Rail.

Assembly





Dimensions



Technical Data

Ambient conditions	
Ambient temperature	-40 ... 70 °C (-40 ... 158 °F)
Mechanical specifications	
Connection	3 conductors
Supply	2 Conductors
Fault output	1 Conductors
Material	Polycarbonate
Mass	approx. 440 g
Dimensions	25.5 x 13 x 2000 mm (1 x 0.5 x 78.7 inch) (W x H x L)
Mounting	in 35 mm DIN mounting rail acc. to EN 60715:2001 Height: 15 mm

Accessories

	UPR-E	End cap for universal power rail UPR-***
	UPR-COVER	Cover for 35 mm DIN mounting rail

Release date: 2023-05-05 Date of issue: 2023-05-05 Filename: 258157_eng.pdf