

Digital Output with Shutdown Input LB6117E

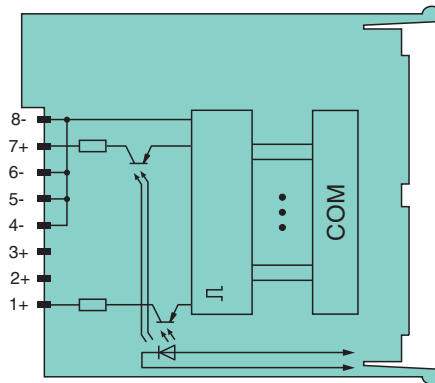
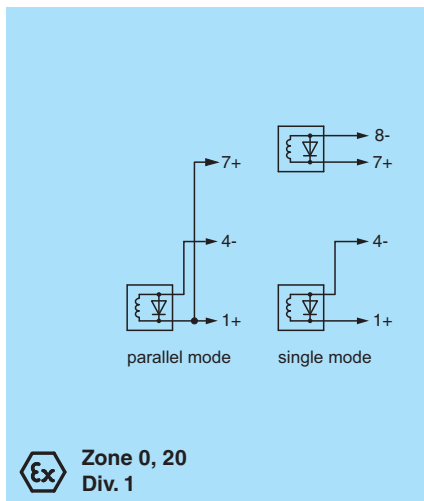
- 2-channel
- Outputs Ex ia
- Line fault detection switched on and off
- Mounting in Zone 2, Class I/Div.2 or in the safe area
- Positive or negative logic selectable
- Simulation mode for service operations (forcing)
- Permanently self-monitoring
- Output with watchdog
- Output with bus-independent safety shutdown
- Module can be exchanged under voltage (hot swap)



Function

The digital output features 2 independent channels.
 The device can be used to drive solenoids, sounders, or LEDs.
 Open and short circuit line faults are detected in on and off state.
 The outputs are galvanically isolated from the bus and the power supply.
 The output can be switched off via a contact. This can be used for bus-independent safety applications.

Connection



Zone 2
Div. 2

Technical Data

Slots	
Occupied slots	1
Supply	
Connection	backplane bus
Rated voltage	U_r Use only in connection with the power supplies LB9***
Power dissipation	1.7 W
Power consumption	2.7 W
Internal bus	
Connection	backplane bus
Interface	manufacturer-specific bus to standard com unit
Digital output	

Release date: 2023-03-24 Date of issue: 2023-03-24 Filename: 263864_eng.pdf

Technical Data

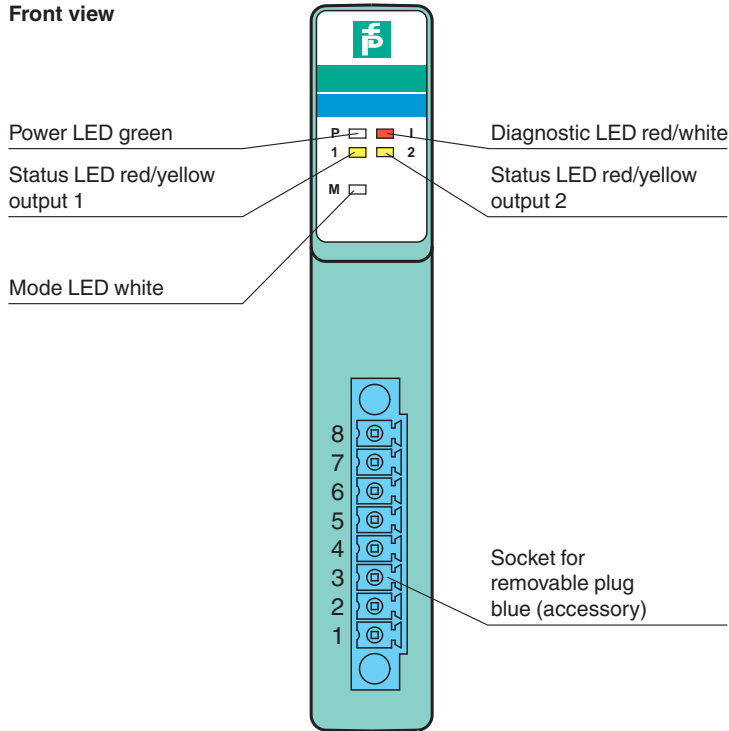
Number of channels		2
Suitable field devices		
Field device		Solenoid Valve
Field device [2]		audible alarm
Field device [3]		visual alarm
Connection		channel I: 1+, 4/5/6/8-; channel II: 7+, 4/5/6/8-
Internal resistor	R_i	131 Ω , both channels parallel 66 Ω
Current limit	I_{max}	50 mA both channels parallel 100 mA
Open loop voltage	U_s	16.5 V , both channels parallel 16.5 V
Line fault detection		can be switched on/off for each channel via configuration tool also when turned off (every 2.5 s the valve is turned on for 2 ms)
Short-circuit		< 50 Ω
Open-circuit		> 10 k Ω
Response time		10 ms (depending on bus cycle time)
Watchdog		within 0.5 s the device goes in safe state, e.g. after loss of communication
Indicators/settings		
LED indication		Power LED (P) green: supply Diagnostic LED (I) red: module fault , red flashing: communication error , white: fixed parameter set (parameters from com unit are ignored) , white flashing: requests parameters from com unit Status LED (1, 2) red: line fault (lead breakage or short circuit) , yellow: state of digital I/O (0/1) Mode LED (M) white: Parallel operation of outputs
Coding		optional mechanical coding via front socket
Directive conformity		
Electromagnetic compatibility		
Directive 2014/30/EU		EN 61326-1:2013
Conformity		
Electromagnetic compatibility		NE 21
Degree of protection		IEC 60529
Environmental test		EN 60068-2-14
Shock resistance		EN 60068-2-27
Vibration resistance		EN 60068-2-6
Damaging gas		EN 60068-2-42
Relative humidity		EN 60068-2-78
Ambient conditions		
Ambient temperature		-40 ... 60 °C (-40 ... 140 °F)
Storage temperature		-40 ... 85 °C (-40 ... 185 °F)
Relative humidity		95 % non-condensing
Altitude		max. 2000 m
Shock resistance		shock type I, shock duration 11 ms, shock amplitude 15 g, number of shocks 18
Vibration resistance		frequency range 10 ... 150 Hz; transition frequency: 57.56 Hz, amplitude/acceleration ± 0.075 mm/1 g; 10 cycles frequency range 5 ... 100 Hz; transition frequency: 13.2 Hz amplitude/acceleration ± 1 mm/0.7 g; 90 minutes at each resonance
Damaging gas		designed for operation in environmental conditions acc. to ISA-S71.04-1985, severity level G3
Mechanical specifications		
Degree of protection		IP20 when mounted on backplane
Connection		removable front connector with screw flange (accessory) wiring connection via spring terminals (0.14 ... 1.5 mm ²) or screw terminals (0.08 ... 1.5 mm ²)
Mass		approx. 150 g
Dimensions		16 x 100 x 102 mm (0.63 x 3.9 x 4 inch)
Data for application in connection with hazardous areas		
EU-type examination certificate		EXA 16 ATEX 0025X
Marking		⊕ II 3(1) G Ex nA [ia Ga] IIC T4 Gc ⊕ II (1) D [Ex ia Da] IIIC ⊕ I (M1) [Ex ia Ma] I

Technical Data

Output		
Voltage	U_o	17.8 V
Current	I_o	162 mA
Power	P_o	721 mW
Internal capacitance	C_i	12 nF
Internal inductance	L_i	0 mH
Output (both channels parallel)		
Voltage	U_o	17.8 V
Current	I_o	324 mA
Power	P_o	1442 mW
Internal capacitance	C_i	24 nF
Internal inductance	L_i	0 mH
Galvanic isolation		
Output/power supply, internal bus		safe electrical isolation acc. to EN 60079-11, voltage peak value 375 V
Directive conformity		
Directive 2014/34/EU		EN IEC 60079-0:2018+AC:2020 EN 60079-11:2012 EN 60079-15:2010
International approvals		
ATEX approval		EXA 16 ATEX 0025X
UL approval		E106378
Control drawing		116-0426 (cULus)
IECEX approval		IECEX EXA 16.0010X
Approved for		Ex nA [ia Ga] IIC T4 Gc [Ex ia Da] IIC [Ex ia Ma] I
General information		
System information		The module has to be mounted in appropriate backplanes (LB9***) in Zone 2 or outside hazardous areas. Here, observe the corresponding declaration of conformity. For use in hazardous areas (e. g. Zone 2, Zone 22 or Div. 2) the module must be installed in an appropriate enclosure.
Supplementary information		Observe the certificates, declarations of conformity, instruction manuals, and manuals where applicable. For information see www.pepperl-fuchs.com .

Assembly

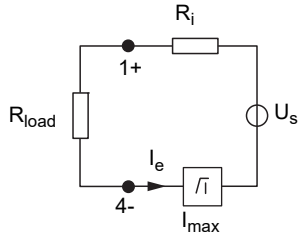
Front view



Release date: 2023-03-24 Date of issue: 2023-03-24 Filename: 263864_eng.pdf

Characteristic Curve

Load calculation



R_{load} = Field loop resistance
 $U_e = U_s - R_i \times I_e$
 $I_e = U_s / (R_i + R_{load})$

Output characteristics

