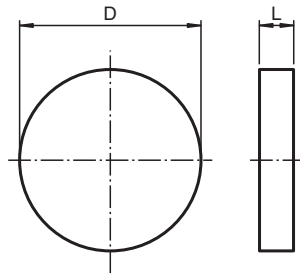


## Insert for Pushbutton CFP.DZ4.SP

- Component for CFP pushbuttons
- Polyamide
- Color black
- Labeling arrow up

### Dimensions



Dimension values see data table.  
Image and drawing are generic for this device type and may deviate from the specific variant.

### Technical Data

Electrical specifications	
Function	Insert for Pushbutton
Color	black
Labeling	
Labeling color	white
Note	spare pushbutton inserts included: red '0', green 'I', black '0', black 'I', black 'II', black 'arrow up', black 'arrow down'
Mechanical specifications	
Material	Polyamide (PA)
Mass	0.6 g
Dimensions	
Diameter (D)	20 mm
Tightening torque	2.8 ... 3.4 Nm
Ambient conditions	
Ambient temperature	-40 ... 55 °C (-40 ... 131 °F)

Release date: 2025-06-12 Date of issue: 2025-06-14 Filename: 290073\_eng.pdf

**Technical Data****General information**

Supplementary information	For more information please contact Pepperl+Fuchs.
---------------------------	--

Enclosure type	LR* SR*.CS* GR.CS*
----------------	--------------------

**Accessories**

Optional accessories	CFP.TP
----------------------	--------