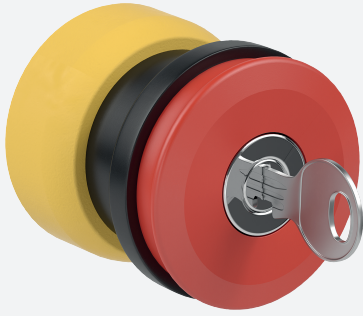


Actuator Head Ex e - Emergency Stop CFP.JR.SP

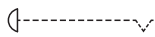


- Emergency stop mushroom button, red
- Key release
- Key removable in both switching positions
- Component for appropriately certified Ex e enclosures
- For use with base-mounted and cover-mounted contact modules
- Ex e and Ex tb certified
- Polyamide

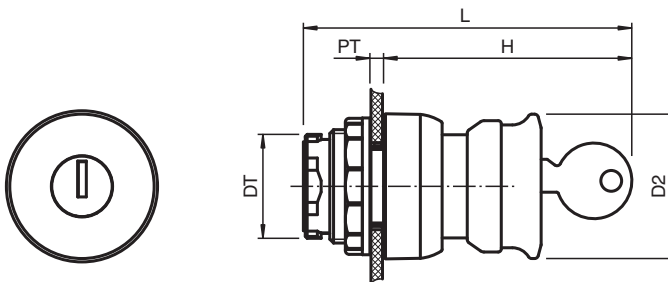


Connection

For complete wiring diagram see combination of actuator head and contact module.



Dimensions



Dimension values see data table.
Image and drawing are generic for this device type and may deviate from the specific variant.

Technical Data

Electrical specifications

Function	mushroom button
Color	red
Operator action	latching , key release

Release date: 2025-06-12 Date of issue: 2025-06-14 Filename: 290081_eng.pdf

Technical Data

Lockable	yes
Labeling	none
Mechanical specifications	
Degree of protection	IP66
Material	
Housing	Polyamide (PA)
Finish	inherent color yellow
Washer gasket	silicone
Mass	65 g
Dimensions	
Actuator head diameter (D2)	39 mm
Panel wall thickness (PT)	1 ... 6 mm
Diameter thru-hole (DT)	30.6 mm
Length outside enclosure (H)	41.6 mm
Total length (L)	61.9 mm
Tightening torque	2.8 ... 3.4 Nm
Mounting	use with base-mounted and cover-mounted contact modules
Ambient conditions	
Ambient temperature	-40 ... 55 °C (-40 ... 131 °F)
Service temperature	-40 ... 65 °C (-40 ... 149 °F)
Data for application in connection with hazardous areas	
EU-type examination certificate	CML 16 ATEX 3339U
Marking	⊕ II 2 GD Ex e IIC Gb Ex tb IIIC Db
International approvals	
IECEX approval	IECEX CML 16.0114U
Conformity	
Degree of protection	EN 60529
General information	
Supplementary information	EC-Type Examination Certificate, Statement of Conformity, Declaration of Conformity, Attestation of Conformity and instructions have to be observed where applicable. For information see www.pepperl-fuchs.com .
Enclosure type	LR* SR*.CS* GR.CS*
Accessories	
Optional accessories	CFP.TP