

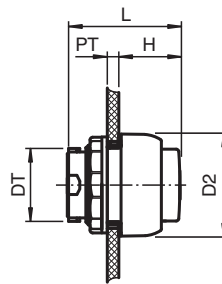


## Actuator Head Ex e - LED Indicator CFP.LW.SP

- Color white
- Component for appropriately certified Ex e enclosures
- Ex e and Ex tb certified
- Polyamide



### Dimensions



Dimension values see data table.  
Image and drawing are generic for this device type and may deviate from the specific variant.

### Technical Data

#### Electrical specifications

Function	LED indicator
Lens color	white

#### Mechanical specifications

Degree of protection	IP66
Material	
Housing	Polyamide (PA)
Finish	inherent color black
Washer gasket	silicone
Mass	20 g
Dimensions	
Actuator head diameter (D2)	39 mm
Panel wall thickness (PT)	1 ... 6 mm
Diameter thru-hole (DT)	30.6 mm
Length outside enclosure (H)	23.6 mm

Release date: 2025-06-12 Date of issue: 2025-06-14 Filename: 290088\_eng.pdf

## Technical Data

Total length (L)	43 mm
Tightening torque	2.8 ... 3.4 Nm
Mounting	use with base-mounted and cover-mounted contact modules
<b>Ambient conditions</b>	
Ambient temperature	-40 ... 55 °C (-40 ... 131 °F)
Service temperature	-40 ... 65 °C (-40 ... 149 °F)
<b>Data for application in connection with hazardous areas</b>	
EU-type examination certificate	CML 16 ATEX 3339U
Marking	⊕ II 2 GD Ex e IIC Gb Ex tb IIIC Db
<b>International approvals</b>	
IECEX approval	IECEX CML 16.0114U
<b>Conformity</b>	
Degree of protection	EN 60529
<b>General information</b>	
Supplementary information	EC-Type Examination Certificate, Statement of Conformity, Declaration of Conformity, Attestation of Conformity and instructions have to be observed where applicable. For information see <a href="http://www.pepperl-fuchs.com">www.pepperl-fuchs.com</a> .
Enclosure type	LR* SR*.CS* GR.CS*
<b>Accessories</b>	
Optional accessories	CFP.TP