



Actuator Head Ex e - Key Control Switch

CFP.K6.SP

- 2 switching positions with left OFF
- Labeling '0 - I'
- Key release
- Component for appropriately certified Ex e enclosures
- For use with cover-mounted contact modules
- Ex e and Ex tb certified
- Polyamide

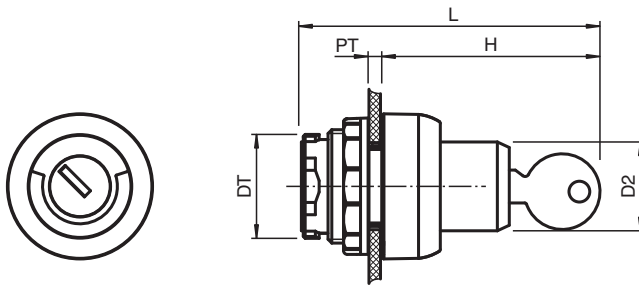


Connection

For complete wiring diagram see combination of actuator head and contact module.



Dimensions



Dimension values see data table.
Image and drawing are generic for this device type and may deviate from the specific variant.

Technical Data

Electrical specifications

Function	key switch rotary actuator
Color	black
Switching configuration	2 position changeover with left OFF

Release date: 2025-06-12 Date of issue: 2025-06-14 Filename: 290141_eng.pdf

Technical Data

Operator action	engage - engage
Lockable	yes
Labeling	0 - I
Mechanical specifications	
Degree of protection	IP66
Material	
Housing	Polyamide (PA)
Finish	inherent color black
Washer gasket	silicone
Mass	46 g
Dimensions	
Actuator head diameter (D2)	39 mm
Panel wall thickness (PT)	1 ... 6 mm
Diameter thru-hole (DT)	30.6 mm
Length outside enclosure (H)	33.3 mm
Total length (L)	53.6 mm
Tightening torque	2.8 ... 3.4 Nm
Mounting	use with cover-mounted contact modules
Ambient conditions	
Ambient temperature	-40 ... 55 °C (-40 ... 131 °F)
Service temperature	-40 ... 65 °C (-40 ... 149 °F)
Data for application in connection with hazardous areas	
EU-type examination certificate	CML 16 ATEX 3339U
Marking	Ⓜ II 2 GD Ex e IIC Gb Ex tb IIIC Db
International approvals	
IECEX approval	IECEX CML 16.0114U
Conformity	
Degree of protection	EN 60529
General information	
Supplementary information	EC-Type Examination Certificate, Statement of Conformity, Declaration of Conformity, Attestation of Conformity and instructions have to be observed where applicable. For information see www.pepperl-fuchs.com .
Enclosure type	SR.CS* GR.CS*
Accessories	
Optional accessories	CFP.TP