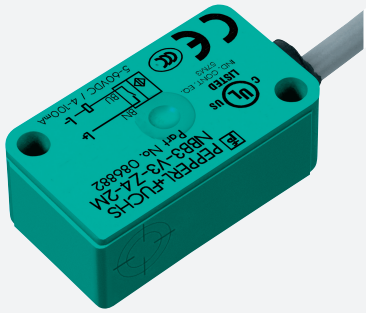


Inductive sensor

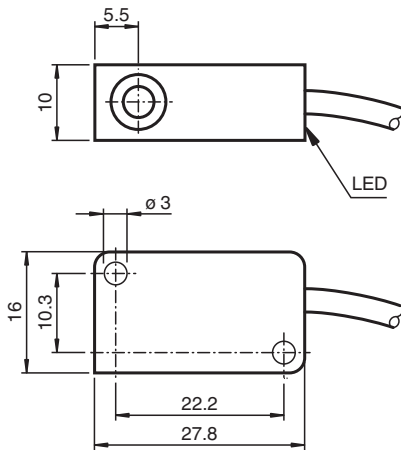
NBB3-V3-Z5-5M-Y263289



- 3 mm flush
- 2-wire DC



Dimensions



Technical Data

General specifications		
Switching function		Normally closed (NC)
Output type		Two-wire
Rated operating distance	s_n	3 mm
Installation		flush
Output polarity		DC
Assured operating distance	s_a	0 ... 2.4 mm
Actual operating distance	s_r	2.7 ... 3.3 mm typ.
Reduction factor r_{Al}		0.45
Reduction factor r_{Cu}		0.35
Reduction factor r_{304}		0.8
Reduction factor r_{Brass}		0.5
Output type		2-wire
Nominal ratings		
Operating voltage	U_B	5 ... 60 V DC
Switching frequency	f	0 ... 2000 Hz
Hysteresis	H	typ. 0.2 mm

Release date: 2025-02-27 Date of issue: 2025-02-28 Filename: 301163_eng.pdf

Technical Data

Reverse polarity protection		reverse polarity protected
Short-circuit protection		no
Inductive overvoltage protection		yes
Voltage drop	U_d	≤ 4 V
Voltage drop at I_L		
Voltage drop $I_L = 10$ mA, switching element on	U_d	3.4 ... 3.9 V typ. 3.6 V
Operating current	I_L	4 ... 100 mA
Lowest operating current	I_m	4 mA
Off-state current	I_r	0.4 ... 0.55 mA typ. 0.46 mA
Time delay before availability	t_v	≤ 1 ms
Switching state indicator		LED, yellow
Limit data		
Tightening torque, fastening screws		0.4 Nm
Functional safety related parameters		
MTTF _d		1552 a
Mission Time (T_M)		20 a
Diagnostic Coverage (DC)		0 %
Standard conformity		
EMC in accordance with		EN 60947-5-2:2007 EN 60947-5-2/A1:2012 IEC 60947-5-2:2007 IEC 60947-5-2 AMD 1:2012
Approvals and certificates		
UL approval		cULus Listed, General Purpose
Ambient conditions		
Ambient temperature		-25 ... 70 °C (-13 ... 158 °F)
Mechanical specifications		
Connection type		cable
Housing material		PBT
Sensing face		PBT
Degree of protection		IP67
Cable		
Wire end ferrules		yes
Cable diameter		3 mm \pm 0.2 mm
Bending radius		> 10 x cable diameter
Material		PVC
Color		grey
Number of cores		2
Core cross section		0.14 mm ²
Length	L	5 m
Dimensions		
Height		10.2 mm
Width		27.8 mm
Length		16 mm

Connection

