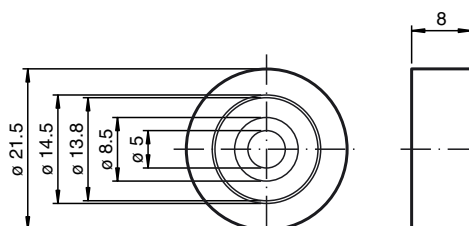




Dimensions



Model number

WCS-GT-WL-P

WCS roller

Features

- Wheel, plastic for WCS guide trolley WCS3-GT09-P1-O

Technical data

General specifications

Description	grooved ball bearing acc. to DIN 625 625 2RS VA
-------------	----------------------------------------------------

Ambient conditions

Operating temperature	-40 ... 60 °C (-40 ... 140 °F)
Storage temperature	-40 ... 85 °C (-40 ... 185 °F)

Mechanical specifications

Material	
Casters	stainless steel
Running surface	TPU, black
Mass	7 g