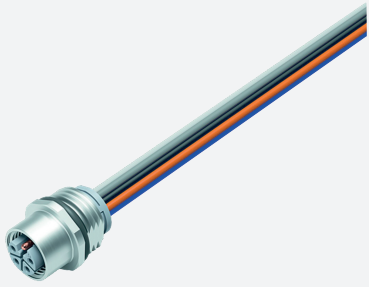


# Receptacles

## V15L-M16-500

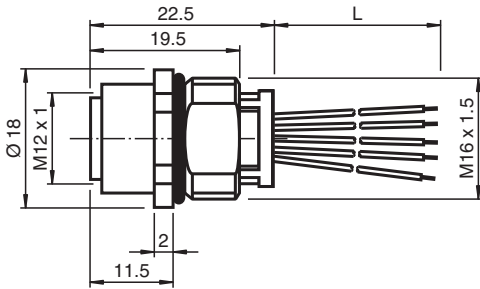


- Front/screw mounting
- UL Recognized Component

Receptacle M12 socket straight L-coded, 5-pin, single cores, mounting M16



### Dimensions



### Technical Data

#### General specifications

##### Connector 1

Connection	socket
Construction type	M12
Style	straight
Locking	screw connection
Number of pins	5
Coding	L-coded

##### Connector 2

Connection	cable end
------------	-----------

#### Electrical specifications

Rated voltage	$U_r$	63 V
Rated current	$I_r$	12 A
Surge protection		Category III
Insulation resistance		min. 10000 M $\Omega$

#### Conformity

Degree of protection	EN 60529
Plug connection	connector M12 x 1 : IEC 61076-2-111

#### Approvals and certificates

UL File Number	E363587
----------------	---------

#### Ambient conditions

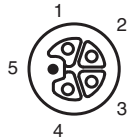
Ambient temperature	-40 ... 105 °C (-40 ... 221 °F)
---------------------	---------------------------------

Release date: 2025-02-17 Date of issue: 2025-02-17 Filename: 322924\_eng.pdf

**Technical Data**

Pollution degree		3
<b>Mechanical specifications</b>		
Plug connector		
Tightening torque		0.6 Nm
Mating cycles		min. 100
Degree of protection		IP68
Connection		flexible leads (16 AWG)
Cable		
Number of cores		5
Core cross section		1.5 mm <sup>2</sup> / 16 AWG
Cores color		Core 1: brown Core 2: white Core 3: blue Core 4: black Core 5: grey
Length	L	500 m
Installation		Front mounting M16 , tightening torque: 1.25 Nm
Mass		42.76 g
<b>Material</b>		
Plug connector		
Screw connection		Zinc diecast, nickel-plated
Seal		FKM
Contact surface		gold plated (Au)
<b>General information</b>		
Scope of delivery		locknut not included

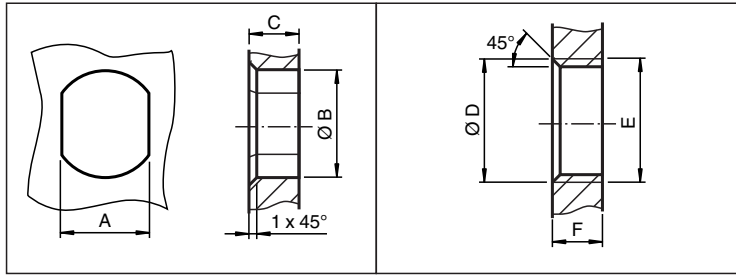
**Connection**



- 1 ) ..... BN
- 2 ) ..... WH
- 3 ) ..... BU
- 4 ) ..... BK
- 5 ) ..... GY

Release date: 2025-02-17 Date of issue: 2025-02-17 Filename: 322924\_eng.pdf

Mounting



	A	B	C	D	E	F
M8	7.1 <sup>+0.1</sup>	Ø 8.2 <sup>+0.1</sup>	2 - 4 mm	-	M8x0.5	2 - 4 mm
M12	11 <sup>+0.1</sup>	Ø 12.2 <sup>+0.1</sup>	< 4 mm	-	M12x1	< 4.5 mm
M16	13.5 <sup>+0.1</sup>	Ø 16.1	< 4.5 mm	Ø 17 <sup>+0.2</sup>	M16x1.5	> 2.5 mm
M20	13.5 <sup>+0.1</sup>	Ø 20.1	-	Ø 20 <sup>+0.2</sup>	M20x1.5	< 6 mm
PG9	13.5 <sup>+0.1</sup>	Ø 15.3 <sup>+0.1</sup>	< 4.5 mm	Ø 16	PG9	> 2.5 mm
PG13.5	18.8 <sup>+0.1</sup>	Ø 20.5 <sup>+0.1</sup>	-	Ø 22 <sup>±0.1</sup>	PG13.5	-

Release date: 2025-02-17 Date of issue: 2025-02-17 Filename: 322924\_eng.pdf