

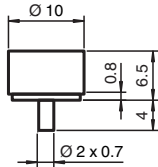
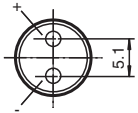
Inductive sensor

921LC2

- Basic series
- 2 mm flush



Dimensions



Technical Data

General specifications		
Switching function		Normally closed (NC)
Output type		NAMUR
Rated operating distance	s_n	2 mm
Installation		flush
Assured operating distance	s_a	0 ... 1.62 mm
Output type		2-wire
Nominal ratings		
Nominal voltage	U_o	8.2 V
Operating voltage	U_B	5 ... 15 V
Switching frequency	f	0 ... 1000 Hz
Current consumption		
Measuring plate not detected		min. 2.7 mA
Measuring plate detected		≤ 1.8 mA
Compliance with standards and directives		
Standard conformity		
NAMUR		EN 60947-5-6:2000

Release date: 2024-05-28 Date of issue: 2024-06-07 Filename: 450097_eng.pdf

Technical Data

Standards	EN IEC 60947-5-2
Approvals and certificates	
CCC approval	CCC approval / marking not required for products rated ≤ 36 V
Ambient conditions	
Ambient temperature	-10 ... 65 °C (14 ... 149 °F)
Mechanical specifications	
Connection type	Solder connection
Housing material	PA
Sensing face	PA
Degree of protection	IP67
Dimensions	
Length	6.5 mm
Diameter	10 mm

Connection

