



Female receptacle

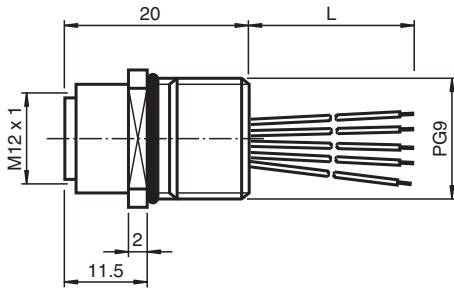
V15-PG9-500

- Front/screw mounting
- Suitable for 2-, 3- and 4-wire technology

Female receptacle, M12/PG9, 5-pin



Dimensions



Technical Data

General specifications

| | |
|-------------------|------------------|
| Connector 1 | |
| Connection | socket |
| Construction type | M12 |
| Style | straight |
| Locking | screw connection |
| Number of pins | 5 |
| Coding | A-coded |
| Connector 2 | |
| Connection | cable end |

Electrical specifications

| | | |
|-----------------------|-------|----------------------------|
| Operating voltage | U_B | max. 60 V AC/DC |
| Test voltage | | > 2000 V _{eff} AC |
| Operating current | I_B | max. 4 A |
| Volume resistance | | < 3 m Ω |
| Insulation resistance | | min. 100 M Ω |

Conformity

| | |
|----------------------|-------------------------------------|
| Degree of protection | EN 60529 |
| Plug connection | connector M12 x 1 : IEC 61076-2-101 |
| Flammability | UL 94 |

Approvals and certificates

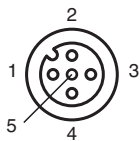
| | |
|----------------|---------|
| UL File Number | E191152 |
|----------------|---------|

Release date: 2025-02-17 Date of issue: 2025-02-17 Filename: 456935_eng.pdf

Technical Data

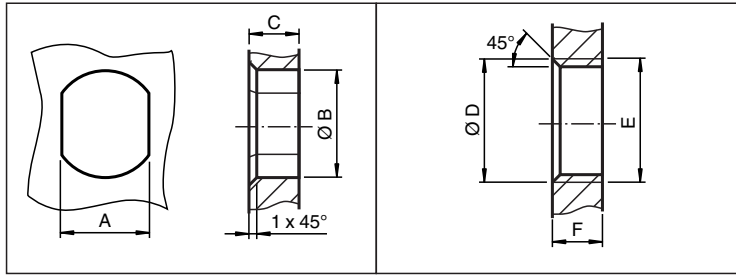
| Ambient conditions | | |
|---------------------------|---|---|
| Ambient temperature | | |
| Cable, fixed installation | | -40 ... 85 °C (-40 ... 185 °F) |
| Cable, flexing | | -25 ... 85 °C (-13 ... 185 °F) |
| Pollution degree | | 3 |
| Mechanical specifications | | |
| Plug connector | | |
| Mating cycles | | min. 100 |
| Degree of protection | | IP67 |
| Connection | | tinned copper single leads, Ø1.2 ±0.07 mm |
| Cable | | |
| Number of cores | | 5 |
| Core cross section | | 0.34 mm ² |
| Cores color | | Core 1: brown Core 2: white Core 3: blue Core 4: black Core 5: grey |
| Core construction | | 7 x 0.25 mm Ø AWG 22 |
| Length | L | 500 mm |
| Installation | | Front mounting PG9 , tightening torque: 2 ... 3 Nm |
| Mass | | 22.92 g |
| Material | | |
| Plug connector | | |
| Screw connection | | Zinc diecast, nickel-plated |
| Seal | | FKM |
| Contact surface | | gold plated (Au) |
| Flammability | | V-0 |
| Cable | | |
| Core insulation | | TPE |
| General information | | |
| Scope of delivery | | locknut not included |

Connection



| | | |
|-----|-------|----|
| 1) | | BN |
| 2) | | WH |
| 3) | | BU |
| 4) | | BK |
| 5) | | GY |

Mounting



| | A | B | C | D | E | F |
|--------|----------------------|------------------------|----------|----------------------|---------|----------|
| M8 | 7.1 ^{+0.1} | Ø 8.2 ^{+0.1} | 2 - 4 mm | - | M8x0.5 | 2 - 4 mm |
| M12 | 11 ^{+0.1} | Ø 12.2 ^{+0.1} | < 4 mm | - | M12x1 | < 4.5 mm |
| M16 | 13.5 ^{+0.1} | Ø 16.1 | < 4.5 mm | Ø 17 ^{+0.2} | M16x1.5 | > 2.5 mm |
| M20 | 13.5 ^{+0.1} | Ø 20.1 | - | Ø 20 ^{+0.2} | M20x1.5 | < 6 mm |
| PG9 | 13.5 ^{+0.1} | Ø 15.3 ^{+0.1} | < 4.5 mm | Ø 16 | PG9 | > 2.5 mm |
| PG13.5 | 18.8 ^{+0.1} | Ø 20.5 ^{+0.1} | - | Ø 22 ^{±0.1} | PG13.5 | - |