

# Receptacles

## V19S-M16-500

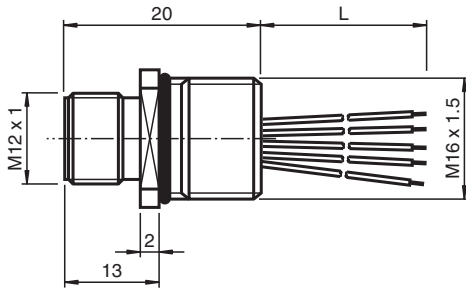
■ Front/screw mounting



Receptacles, M12/M16, 8-pin



### Dimensions



### Technical Data

#### General specifications

##### Connector 1

Connection	plug
Construction type	M12
Style	straight
Locking	screw connection
Number of pins	8
Coding	A-coded

##### Connector 2

Connection	cable end
------------	-----------

#### Electrical specifications

Operating voltage	$U_B$	max. 30 V AC/DC
Test voltage		> 2000 V <sub>eff</sub> AC
Operating current	$I_B$	max. 2 A
Volume resistance		< 3 m $\Omega$
Insulation resistance		min. 100 M $\Omega$

#### Conformity

Degree of protection	EN 60529
Plug connection	connector M12 x 1 : IEC 61076-2-101
Flammability	UL 94

#### Ambient conditions

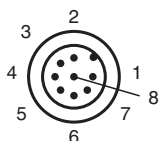
Ambient temperature	
---------------------	--

Release date: 2025-02-17 Date of issue: 2025-02-17 Filename: 456938\_eng.pdf

**Technical Data**

Cable, fixed installation		-40 ... 85 °C (-40 ... 185 °F)
Cable, flexing		-25 ... 85 °C (-13 ... 185 °F)
Pollution degree		3
<b>Mechanical specifications</b>		
Plug connector		
Mating cycles		min. 100
Degree of protection		IP65 / IP67
Connection		tinned copper single leads, Ø1.15 ±0.07 mm
Cable		
Number of cores		8
Core cross section		0.25 mm <sup>2</sup>
Cores color		Core 1: white Core 2: brown Core 3: green Core 4: yellow Core 5: grey Core 6: pink Core 7: blue Core 8: red
Core construction		14 x 0.15 mm Ø AWG 24
Length	L	500 mm
Installation		Front mounting M16 , tightening torque: 3 ... 4 Nm
Mass		24 g
<b>Material</b>		
Plug connector		
Screw connection		Zinc diecast, nickel-plated
Seal		FKM
Contact surface		gold plated (Au)
Flammability		V-0
Cable		
Core insulation		TPE
<b>General information</b>		
Scope of delivery		locknut not included

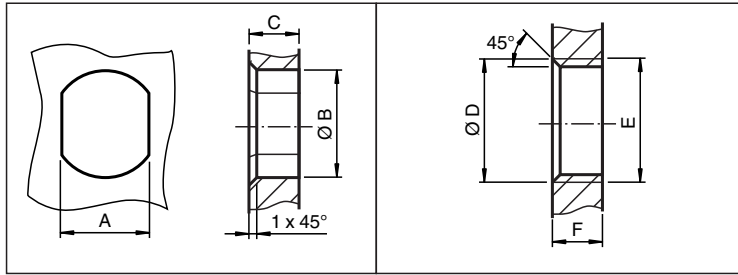
**Connection**



- 1 ————— WH
- 2 ————— BN
- 3 ————— GN
- 4 ————— YE
- 5 ————— GY
- 6 ————— PK
- 7 ————— BU
- 8 ————— RD

Release date: 2025-02-17 Date of issue: 2025-02-17 Filename: 456938\_eng.pdf

Mounting



	A	B	C	D	E	F
M8	7.1 <sup>+0.1</sup>	Ø 8.2 <sup>+0.1</sup>	2 - 4 mm	-	M8x0.5	2 - 4 mm
M12	11 <sup>+0.1</sup>	Ø 12.2 <sup>+0.1</sup>	< 4 mm	-	M12x1	< 4.5 mm
M16	13.5 <sup>+0.1</sup>	Ø 16.1	< 4.5 mm	Ø 17 <sup>+0.2</sup>	M16x1.5	> 2.5 mm
M20	13.5 <sup>+0.1</sup>	Ø 20.1	-	Ø 20 <sup>+0.2</sup>	M20x1.5	< 6 mm
PG9	13.5 <sup>+0.1</sup>	Ø 15.3 <sup>+0.1</sup>	< 4.5 mm	Ø 16	PG9	> 2.5 mm
PG13.5	18.8 <sup>+0.1</sup>	Ø 20.5 <sup>+0.1</sup>	-	Ø 22 <sup>±0.1</sup>	PG13.5	-

Release date: 2025-02-17 Date of issue: 2025-02-17 Filename: 456938\_eng.pdf