



Male receptacle

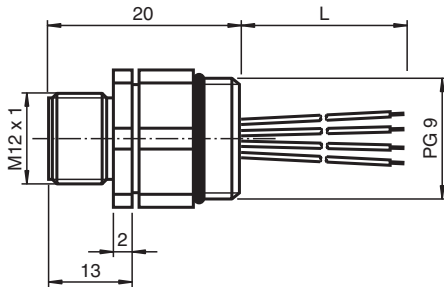
V1S-PG9-500

- Front/screw mounting
- Suitable for 2-, 3- and 4-wire technology

Male receptacle, M12/PG9, 4-pin



Dimensions



Technical Data

General specifications

Connector 1

Connection	plug
Construction type	M12
Style	straight
Locking	screw connection
Number of pins	4
Coding	A-coded

Connector 2

Connection	cable end
------------	-----------

Electrical specifications

Operating voltage	U_B	max. 250 V AC/DC
Test voltage		> 2000 V _{eff} AC
Operating current	I_B	max. 4 A
Volume resistance		< 3 m Ω
Insulation resistance		min. 100 M Ω

Conformity

Degree of protection	EN 60529
Plug connection	connector M12 x 1 : IEC 61076-2-101
Flammability	UL 94

Approvals and certificates

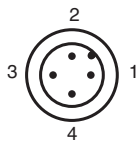
UL File Number	E191152
----------------	---------

Release date: 2025-02-17 Date of issue: 2025-02-17 Filename: 4568939_eng.pdf

Technical Data

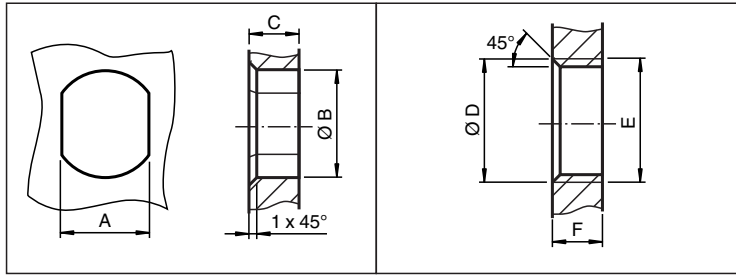
Ambient conditions		
Ambient temperature		
Cable, fixed installation		-40 ... 85 °C (-40 ... 185 °F)
Cable, flexing		-25 ... 85 °C (-13 ... 185 °F)
Pollution degree		3
Mechanical specifications		
Plug connector		
Mating cycles		min. 100
Degree of protection		IP67
Connection		tinned copper single leads, Ø1.2 ±0.07 mm
Cable		
Number of cores		4
Core cross section		0.34 mm ²
Cores color		Core 1: brown Core 2: white Core 3: blue Core 4: black
Core construction		7 x 0.25 mm Ø AWG 22
Length	L	500 mm
Installation		Front mounting PG9 , tightening torque: 2 ... 3 Nm
Mass		18.95 g
Material		
Plug connector		
Screw connection		brass, nickel-plated
Seal		NBR
Contact surface		gold plated (Au)
Flammability		V-0
Cable		
Core insulation		TPE
General information		
Scope of delivery		locknut not included

Connection Assignment



1	—————	BN
2	—————	WH
3	—————	BU
4	—————	BK

Mounting



	A	B	C	D	E	F
M8	7.1 ^{+0.1}	Ø 8.2 ^{+0.1}	2 - 4 mm	-	M8x0.5	2 - 4 mm
M12	11 ^{+0.1}	Ø 12.2 ^{+0.1}	< 4 mm	-	M12x1	< 4.5 mm
M16	13.5 ^{+0.1}	Ø 16.1	< 4.5 mm	Ø 17 ^{+0.2}	M16x1.5	> 2.5 mm
M20	13.5 ^{+0.1}	Ø 20.1	-	Ø 20 ^{+0.2}	M20x1.5	< 6 mm
PG9	13.5 ^{+0.1}	Ø 15.3 ^{+0.1}	< 4.5 mm	Ø 16	PG9	> 2.5 mm
PG13.5	18.8 ^{+0.1}	Ø 20.5 ^{+0.1}	-	Ø 22 ^{±0.1}	PG13.5	-