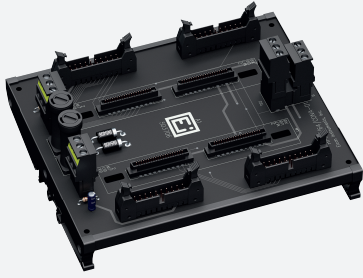


HART Termination Board

HiSHPMM/64/CONA-01



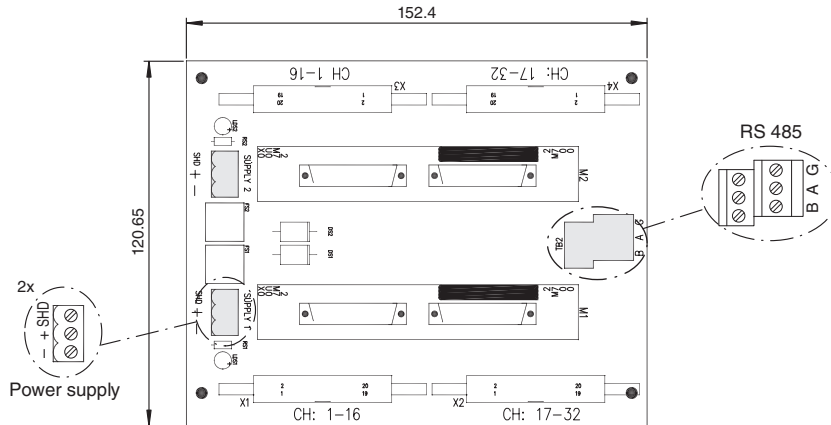
- 64-channel
- 24 V DC supply
- Connection of two Multiplexers to HART enabled Honeywell TDC 3000 FTA's
- Redundant power supply connections
- Dual RS 485 connections
- HART loop connection via four 20-pin flat ribbon connectors
- Compact design



Function

The Termination Board is designed to complement the I/O termination panels and provide access to all HART information. The HART Termination Board provides a robust solution for on-line HART communications, interfaces up to 64 field located HART devices, and it allows a connection to H-System Termination Boards. This is ideal for retrofitting existing installations and maintains all existing hardware and field wiring.

Connection



Technical Data

Supply	
Rated voltage	U _r 24 V DC
Fusing	2 A , 5 x 20 mm (0.2 x 0.8 inch)
Power dissipation	0.7 W , with Multiplexer
Reverse polarity protection	yes
HART signal channels (intrinsically safe)	
HART signal channels	
Number of channels	64 unbalanced signal loops
Redundancy	
Supply	yes
Galvanic isolation	
HART signal channels	30 V DC

Release date: 2023-06-01 Date of issue: 2023-06-01 Filename: 475503_eng.pdf

Technical Data

Ambient conditions		
Ambient temperature	-20 ... 55 °C (-4 ... 131 °F)	
Relative humidity	5 ... 90 %, non-condensing	
Mechanical specifications		
Core cross section	2.5 mm ² (16 AWG)	
Connection	HART loop interface: connectors depending on version RS-485 interface: removable screw terminals power: removable screw terminals	
Mass	approx. 500 g	
Dimensions	152 x 121 x 142 mm (6 x 4.75 x 5.6 inch) (W x H x D) , depth including module assembly with HiDMux2700	
Mounting	DIN rail mounting	
General information		
Supplementary information	Observe the certificates, declarations of conformity, instruction manuals, and manuals where applicable. For information see www.pepperl-fuchs.com .	

Additional Information

Connection Assignment

X1 (X3)			X2 (X4)		
Pin	Signal	Channel	Pin	Signal	Channel
A1	1+	1	A1	17+	17
B1	2+	2	B1	18+	18
A2	3+	3	A2	19+	19
B2	4+	4	B2	20+	20
A3	5+	5	A3	21+	21
B3	6+	6	B3	22+	22
A4	7+	7	A4	23+	23
B4	8+	8	B4	24+	24
A5	9+	9	A5	25+	25
B5	10+	10	B5	26+	26
A6	11+	11	A6	27+	27
B6	12+	12	B6	28+	28
A7	13+	13	A7	29+	29
B7	14+	14	B7	30+	30
A8	15+	15	A8	31+	31
B8	16+	16	B8	32+	32
A9	GND		A9	GND	
B9	GND		B9	GND	
A10	GND		A10	GND	
B10	GND		B10	GND	

Versions

HiSHPMM/64/CONA-01	Version for wall mounting
HiSHPMM/64/CONA-01-DIN	Version for DIN rail mounting

Accessories

CA-R20-R2-**	Connection cable, where ** equals length in foot
--------------	--