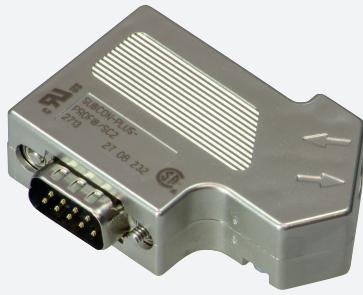


D-Sub plug 9-pin

LB9001A

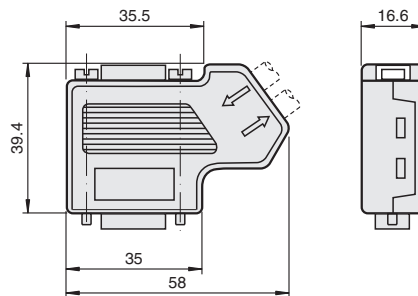


- For PROFIBUS DP, MODBUS, RS 485
- Cable feed below 35°
- With switchable bus termination resistor
- With connector for bus monitor or class 2 master

D-Sub plug 9-pin, cable feed below 35°



Dimensions



Technical Data

Electrical specifications			
Rated voltage	U_r	60 V AC/DC	
Rated current	I_r	1 A	
Interface			
Interface type		PROFIBUS DP	
Transfer rate		max. 12 MBit/s	
Connector pinout		3, 5, 6, 8	
Ambient conditions			
Ambient temperature		-20 ... 75 °C (-4 ... 167 °F)	
Storage temperature		-25 ... 80 °C (-13 ... 176 °F)	
Mechanical specifications			
Core cross section		max. 1.5 mm ²	
Cable diameter		7.6 ... 8.4 mm	
Cable gland		screw terminals	
Material			
Housing		metallized ABS	
Mass		approx. 40 g	

Release date: 2023-06-13 Date of issue: 2023-06-13 Filename: 542005_eng.pdf

Technical Data

Dimensions (W x H x D) 58 mm x 39.4 mm x 16.6 mm

International approvals

Marine approval

Lloyd Register	15/20021
DNV GL Marine	TAA0000034
American Bureau of Shipping	T1450280/UN
Bureau Veritas Marine	22449/B0 BV