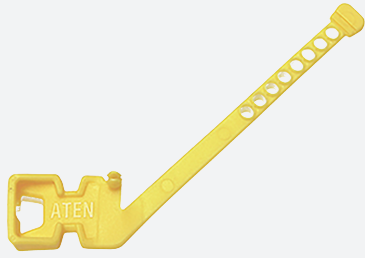


Cable lock

ATEN-LockPro



- Innovative design improves stability and flexibility
- One-piece and reusable design for easy installation and removal
- Ensures strong and reliable cable connections
- Universal design for securing most cables
- Environmentally safe – RoHS compliant and recyclable

Latch that allows to lock cables to BTC

Technical Data

Ambient conditions

Storage temperature	-20 ... 60 °C (-4 ... 140 °F)
Relative humidity	95 % , non-condensing

Mechanical specifications

Mass	1 g
Dimensions	8.61 mm x 6.47 mm x 0.66 mm

General information

Packing unit	10 item(s)
--------------	------------