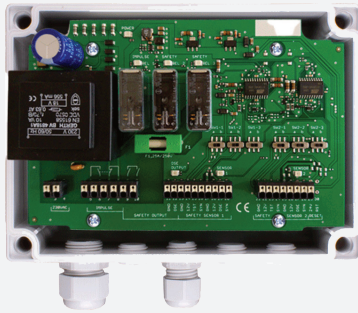


# Safety control unit

## AOS 7024

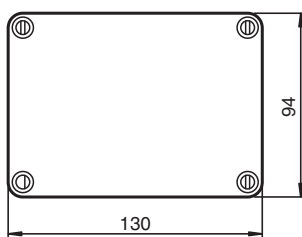
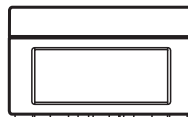
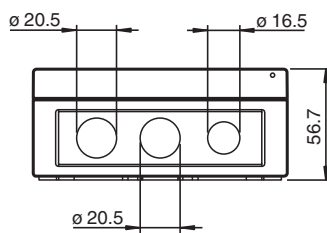
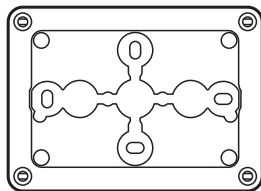


- Safety control unit
- 2-channel interpreter
- for two optical closing edge protection devices, two "TWIN-PRO" pull-in protection devices, or two LIGs with OSE outputs
- Two OSE inputs or 8k2 inputs
- one safety circuit
- Power/function indicator LEDs
- Operating voltage 24 V AC/DC

Safety control unit



### Dimensions



### Technical Data

#### General specifications

Marking	CE
---------	----

#### Indicators/operating means

Operation indicator	LED green: power on
Function indicator	LED red: lights up when the sensor is triggered LED green: lights up when the safety relay is activated LED yellow: safety relay has been interrupted

#### Electrical specifications

Operating voltage	$U_B$	24 V AC/V DC $\pm$ 10 %
Power consumption	$P_0$	max. 6 VA

Release date: 2024-07-03 Date of issue: 2024-07-08 Filename: 64319429\_eng.pdf

## Technical Data

### Output

Output type	relay, NO contact
Switching voltage	250 V AC / 50 V DC
Switching current	max. 1.25 mA
Energized/De-energized delay	typ. 500 ms
Response time	≤ 20 ms

### Conformity

Functional safety	ISO 13849-1 , Cat. 3 PL d
Product standard	EN 61000-6-2, EN 61000-6-3

### Ambient conditions

Ambient temperature	-25 ... 60 °C (-13 ... 140 °F)
Storage temperature	-25 ... 65 °C (-13 ... 149 °F)

### Mechanical specifications

Degree of protection	IP66 according to EN 60529
Connection	screw terminals , lead cross section 2 x 1 mm <sup>2</sup>
Material	
Housing	Polycarbonate
Mass	750 g
Dimensions	
Height	113 mm
Width	163 mm
Depth	62.5 mm