

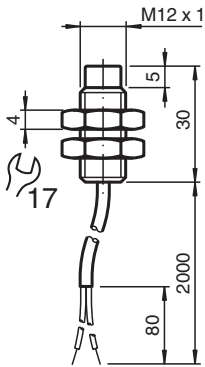
Inductive sensor

NJ4-12GM-Z11-2M-Y

■ Comfort series



Dimensions



Technical Data

General specifications

Switching function		Normally closed (NC)
Rated operating distance	s_n	4 mm
Installation		non-flush
Assured operating distance	s_a	0 ... 3.24 mm
Reduction factor r_{Al}		0.4
Reduction factor r_{Cu}		0.3
Reduction factor r_{304}		0.85
Output type		2-wire

Nominal ratings

Nominal voltage	U_o	12 V
Switching frequency	f	0 ... 1500 Hz
Hysteresis	H	3 %
Current consumption		
Measuring plate not detected		≥ 3 mA
Measuring plate detected		≤ 1 mA

Compliance with standards and directives

Standard conformity		
Standards		EN IEC 60947-5-2

Ambient conditions

Release date: 2024-05-28 Date of issue: 2024-06-01 Filename: 70101136_eng.pdf

Technical Data

Ambient temperature	-25 ... 70 °C (-13 ... 158 °F)
Mechanical specifications	
Connection type	cablc PVC , 2 m with wire end ferrule
Core cross section	0.34 mm ²
Housing material	brass, nickel-plated
Sensing face	PBT
Degree of protection	IP67
Dimensions	
Length	30 mm
Diameter	12 mm

Connection

