

# Magnetic field sensor

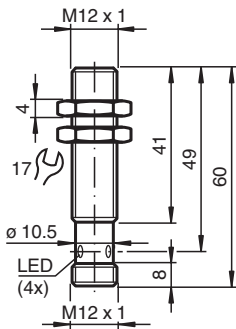
## MMB70-12GH50-1N-V1



- Comfort series
- 70 mm flush



### Dimensions



### Technical Data

General specifications		
Switching function		Normally open (NO)
Output type		NAMUR
Rated operating distance	$s_n$	5 ... 70 mm
Installation		flush in non-magnetic metal
Output type		2-wire
Nominal ratings		
Nominal voltage	$U_o$	8.2 V ( $R_i$ approx. 1 k $\Omega$ )
Switching frequency	f	0 ... 1000 Hz
Current consumption		
Magnet detected		$\geq 2.3$ mA
Magnet not detected		$\leq 1$ mA
Switching state indicator		LED, yellow
Functional safety related parameters		
MTTF <sub>d</sub>		2828 a
Mission Time ( $T_M$ )		20 a
Diagnostic Coverage (DC)		0 %

Release date: 2025-03-12 Date of issue: 2025-03-12 Filename: 70108302\_eng.pdf

## Technical Data

### Compliance with standards and directives

Standard conformity	
NAMUR	EN 60947-5-6:2000
Standards	EN 60947-5-2:2007 EN 60947-5-2/A1:2012

### Approvals and certificates

IECEX approval	
Equipment protection level Ga	IECEX TUN 20.0007
Equipment protection level Da	IECEX TUN 20.0007
ATEX approval	
Equipment protection level Ga	TÜV 20 ATEX 241336
Equipment protection level Da	TÜV 20 ATEX 241336

### Ambient conditions

Ambient temperature	-25 ... 70 °C (-13 ... 158 °F)
---------------------	--------------------------------

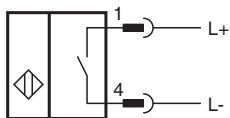
### Mechanical specifications

Connection type	Connector plug
Housing material	Stainless steel 1.4404 / AISI 316L
Sensing face	Stainless steel 1.4404 / AISI 316L
Degree of protection	IP67
Connector	
Threading	M12 x 1
Number of pins	4
Dimensions	
Length	60 mm
Diameter	12 mm

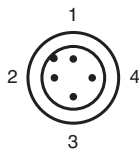
### General information

Use in the hazardous area	see instruction manuals
---------------------------	-------------------------

## Connection

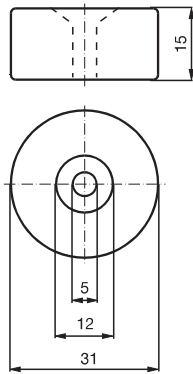


## Connection Assignment

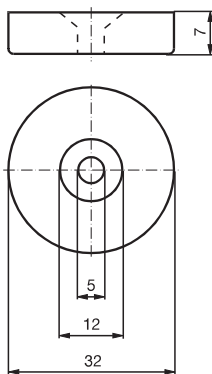


**Additional Information**

**Magnet DM 60-31-15**



**Magnet DM 25-32-07**



Release date: 2025-03-12 Date of issue: 2025-03-12 Filename: 70108302\_eng.pdf