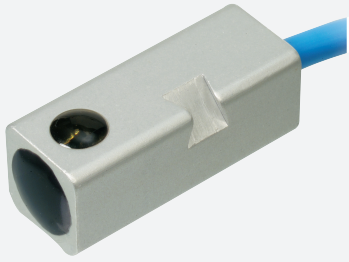


Magnetic field sensor

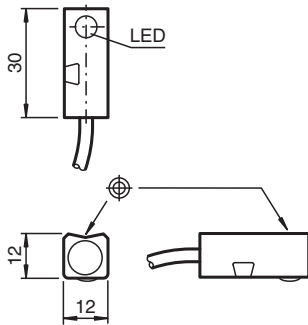
MB35-F12-1N



- Comfort series
- 35 mm flush



Dimensions



Technical Data

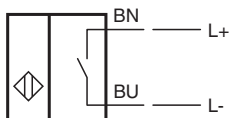
General specifications		
Switching function		Normally open (NO)
Output type		NAMUR
Rated operating distance	s_n	35 mm
Installation		flush
Assured operating distance	s_a	0 ... 35 mm
Output type		2-wire
Nominal ratings		
Nominal voltage	U_o	8.2 V (R_i approx. 1 k Ω)
Switching frequency	f	0 ... 5000 Hz
Current consumption		
Magnet detected		≥ 3 mA
Magnet not detected		≤ 1 mA
Switching state indicator		LED, yellow
Functional safety related parameters		
MTTF _d		2781 a
Mission Time (T_M)		20 a

Release date: 2025-04-09 Date of issue: 2025-04-09 Filename: 70108303_eng.pdf

Technical Data

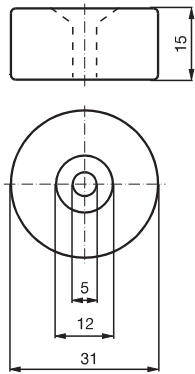
Diagnostic Coverage (DC)	0 %	
Compliance with standards and directives		
Standard conformity		
NAMUR	EN 60947-5-6:2000	
Standards	EN 60947-5-2:2007 EN 60947-5-2/A1:2012	
Approvals and certificates		
IECEX approval		
Equipment protection level Gb	IECEX TUN 20.0007	
Equipment protection level Da	IECEX TUN 20.0007	
ATEX approval		
Equipment protection level Gb	TÜV 20 ATEX 241336	
Equipment protection level Da	TÜV 20 ATEX 241336	
Ambient conditions		
Ambient temperature	-25 ... 70 °C (-13 ... 158 °F)	
Mechanical specifications		
Connection type	cable	
Housing material	anodized aluminum	
Sensing face	black plastic	
Degree of protection	IP67	
Cable		
Material	PVC	
Color	blue	
Number of cores	2	
Core cross section	0.34 mm ²	
Length	L	2 m
Dimensions		
Height	12 mm	
Width	12 mm	
Length	30 mm	
General information		
Use in the hazardous area	see instruction manuals	

Connection

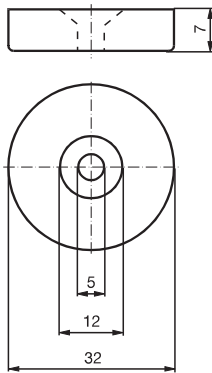


Additional Information

Magnet DM 60-31-15



Magnet DM 25-32-07



Release date: 2025-04-09 Date of issue: 2025-04-09 Filename: 70108303_eng.pdf