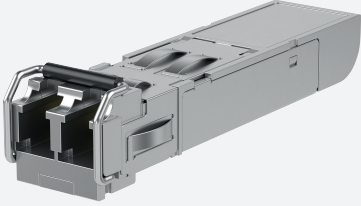


# SFP: 100BASE-LX Fast Ethernet Single-mode Fiber Extended Temperature



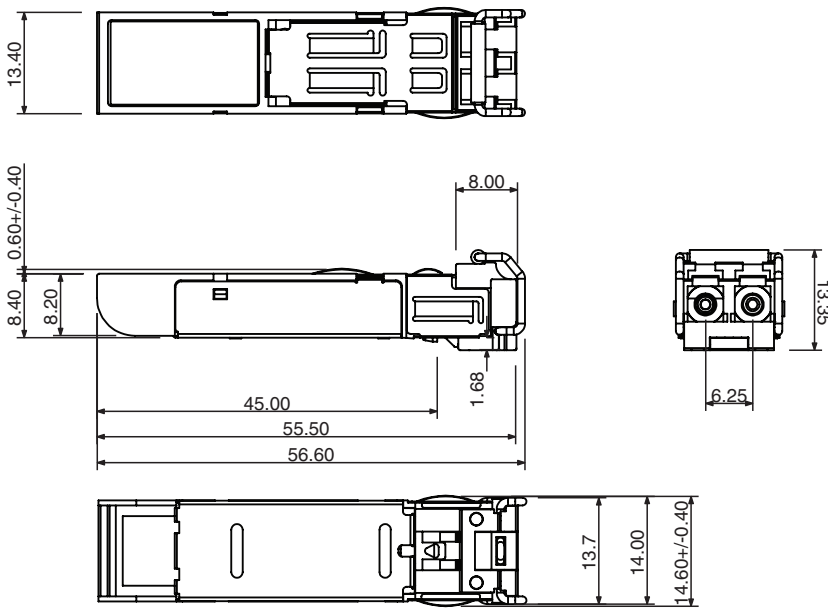
## SFP-S-30KM-F-W

- Industry standard small form pluggable (SFP) package
- SFP Multi-Source Agreement compliant
- Hot pluggable
- Class 1 laser product complies with EN 60825-1
- Single power supply 3.3V
- TTL signal detect indicator
- Duplex LC connector
- Extended temperature range: -40 to 85° C

Single-mode 30KM 100BASE-LX Fast Ethernet Fiber SFP



## Dimensions



## Technical Data

### Ethernet Interface

Standards

IEEE802.3u 100BASE-LX

yes

### Interface 1

Interface type

100BASE-LX Fast Ethernet Fiber

Physical

SFP, Hot pluggable

Transfer rate

155 Mbps

### Fiber optics functionality

## Technical Data

Wave length	1310 nm
Cable type	9/125µm Single-mode
Cable length	max. 30 km
Connector type	1 Duplex LC
Transmit power (optical)	-15 ... -8 dBm
Receive sensitivity	-34 ... 0 dBm
Link budget	19 dB
<b>Directive conformity</b>	
Electromagnetic compatibility	
Directive 2014/30/EU	EN55024, IEC 61000-4-2, IEC 61000-4-3, IEC 61000-4-4, IEC 61000-4-6, IEC 61000-4-8
<b>Standard conformity</b>	
Emitted interference	CISPR 22 , FCC Part 15 Subpart B Class A , EN61000-6-4, IEC61000-6-4
Noise immunity	EN 55024
Standards	SFP Multi-Source (MSA) compliant Class 1 laser product complies with EN 60825-1
<b>Ambient conditions</b>	
Ambient temperature	-40 ... 85 °C (-40 ... 185 °F)
Storage temperature	-40 ... 85 °C (-40 ... 185 °F)
Relative humidity	max. 95 %
<b>Mechanical specifications</b>	
Mass	17 g
Dimensions	
Height	8.5 mm
Width	13.4 mm
Length	56.5 mm