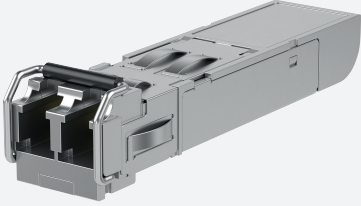


SFP: 1000BASE-EX Gigabit Ethernet Single-mode Fiber Extended Temperature



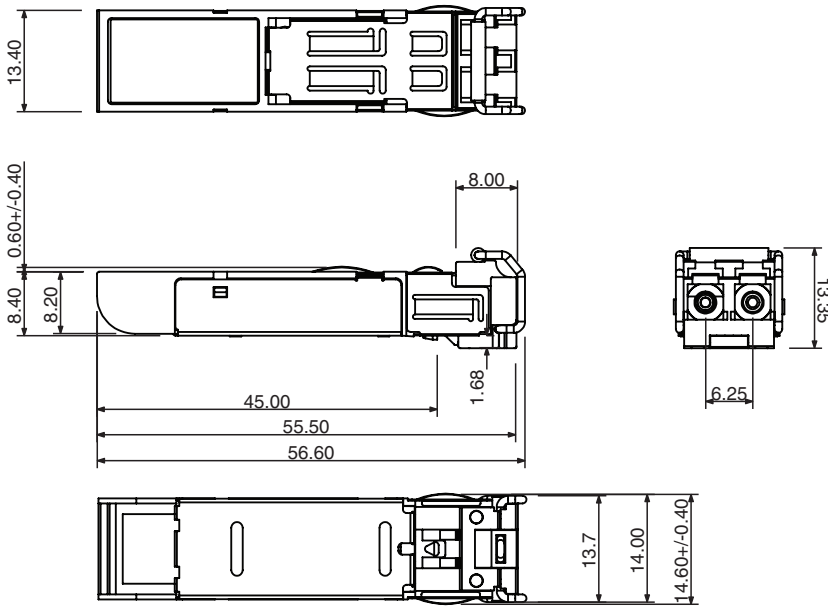
SFP-S-40KM-G-W

- Industry standard small form pluggable (SFP) package
- SFP Multi-Source Agreement compliant
- Hot pluggable
- Class 1 laser product complies with EN 60825-1
- Single power supply 3.3V
- TTL signal detect indicator
- Duplex LC connector
- Extended temperature range: -40 to 85° C

Single-mode 40KM 1000BASE-EX Gigabit Ethernet Fiber SFP



Dimensions



Technical Data

Ethernet Interface

Standards

IEEE802.3z 1000BASE-LX	yes
------------------------	-----

Interface 1

Interface type	1000BASE-EX Gigabit Ethernet Fiber
Physical	SFP, Hot pluggable
Transfer rate	1.25 Gbps

Fiber optics functionality

Technical Data

Wave length	1310 nm
Cable type	9/125µm Single-mode
Cable length	max. 40 km
Connector type	1 Duplex LC
Transmit power (optical)	-4 ... 1 dBm
Receive sensitivity	-24 ... -3 dBm
Link budget	20 dB
Directive conformity	
Electromagnetic compatibility	
Directive 2014/30/EU	EN55024, IEC 61000-4-2, IEC 61000-4-3, IEC 61000-4-4, IEC 61000-4-6, IEC 61000-4-8
Standard conformity	
Emitted interference	CISPR 22 , FCC Part 15 Subpart B Class A , EN61000-6-4, IEC61000-6-4
Noise immunity	EN 55024
Standards	SFP Multi-Source (MSA) compliant Class 1 laser product complies with EN 60825-1
Ambient conditions	
Ambient temperature	-40 ... 85 °C (-40 ... 185 °F)
Storage temperature	-40 ... 85 °C (-40 ... 185 °F)
Relative humidity	max. 95 %
Mechanical specifications	
Mass	17 g
Dimensions	
Height	8.5 mm
Width	13.4 mm
Length	56.5 mm